



## BelloCell<sup>®</sup> Cell Culture Systems

**Disposable  
High-Yield  
Cell Culture  
System**



**Cell Mass  
Cell Membrane Protein  
Monoclonal Antibodies  
Recombinant Protein  
Virus Production**

U.S. and Canada phone: 1-800-843-1794 • Fax: 1-800-922-4361  
customer-service@cglifesciences.com • www.cglifesciences.com

**CHEMGLASS LIFE SCIENCES IS A WOMAN-OWNED BUSINESS**

## ORDERING INFORMATION

### Ordering & General Information

#### Discounts / Prices / Terms

Prices in this catalog are list prices and they are current at the time of posting. Please call for your discount. NOTE: All prices are subject to change without notice.

#### Shipments

Most of the items listed in this catalog are in stock and available for immediate shipment. In the event that your order cannot be filled completely, a partial shipment will be made with the backordered items shipped shortly. Unless otherwise instructed we will ship UPS or FedEx. NOTE: If you desire your order sent in one shipment, please specify this when placing your order.

#### Returns

Please do not return any material without our consent. If any material is to be returned, please contact us at 1-800-843-1794 to receive authorization. Chemglass Life Sciences cannot be responsible for material returned without our permission.

#### Shortages

In the event that the quantity and/or material received does not agree with the items ordered, notify us immediately. NOTE: Claims or shortages must be made within 10 working days of receipt of shipment.

#### Specifications

Photographs and illustrations in this catalog represent the products as described in the text and as specified by the dimensions provided. Chemglass Life Sciences reserves the right to modify or change these specifications if warranted.

#### Trademarks

The following are trademarks of Chemglass Life Sciences Inc.:  
CHEMGLASS LIFE SCIENCES

Other registered trademarks in this catalog:

Bellocell®	Cesco Bioengineering
Bellostage®	Cesco Bioengineering
BioNOC™	Cesco Bioengineering
GlucCell®	Cesco Bioengineering

CHEMGLASS ACCEPTS:



3800 North Mill Road  
Vineland NJ 08360  
U.S. and Canada phone:  
1-800-843-1794

Fax: 1-800-922-4361

customer-service@cglifesciences.com  
www.cglifesciences.com

Each BelloStage® console accommodates up to four disposable bottles making this an ideal screening device to test various medium formulations or cell lines.

No steam or water lines, autoclave or utilities required, just a power outlet and CO2 incubator

Simple to operate – virtually no learning curve

Controller- adjusts nutrient and gas exchange of the bottle.

Magnetized controller enables convenient positioning by attaching it to the outside of the incubator.

Extremely compact system fits in most standard CO2 incubators.

Bright and large display is easy to read.

Useful for batch and semi-batch operation where process components are easily traceable.

0.22 um ventilation filter is provided in the cap.

Cells remain entrapped in the BioNOC™ II matrix bed simplifying media replacement and product harvesting.

Sampling Port enables aseptic removal of BioNOC™ II carriers for cell counting.

Retaining ring locks bottles into place in the BelloStage® console.

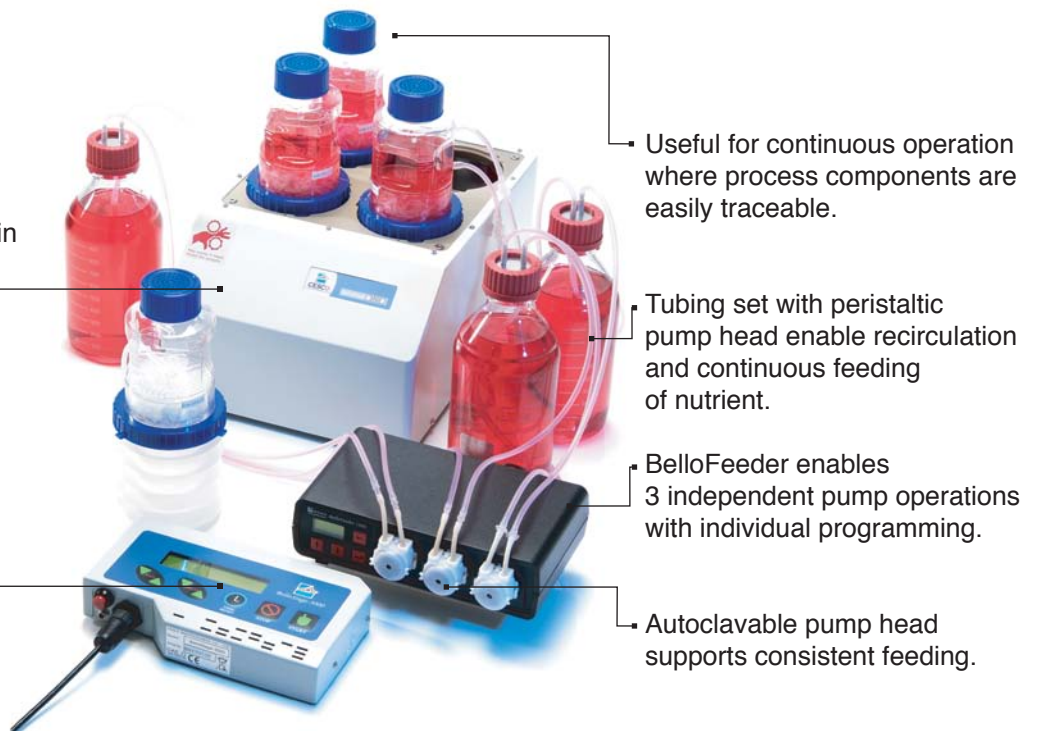
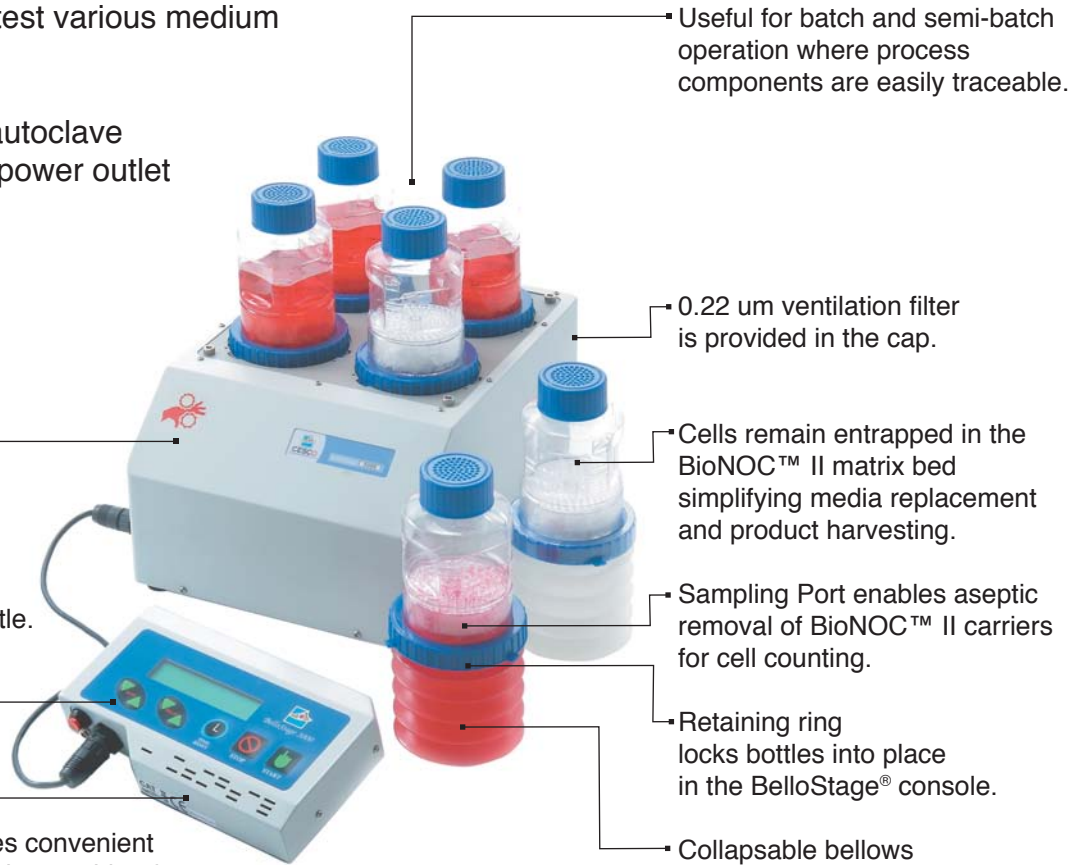
Collapsible bellows

Useful for continuous operation where process components are easily traceable.

Tubing set with peristaltic pump head enable recirculation and continuous feeding of nutrient.

BelloFeeder enables 3 independent pump operations with individual programming.

Autoclavable pump head supports consistent feeding.



# PRINCIPLE

BelloCell® is a disposable bioreactor capable of high density cell culture for protein expression, virus and monoclonal antibody production.

BelloCell® is designed based on the concept of bellow-induced alternation flow of media and air through porous matrices, where cells reside and grow, providing a low shear, high aeration and foam free culture environment.

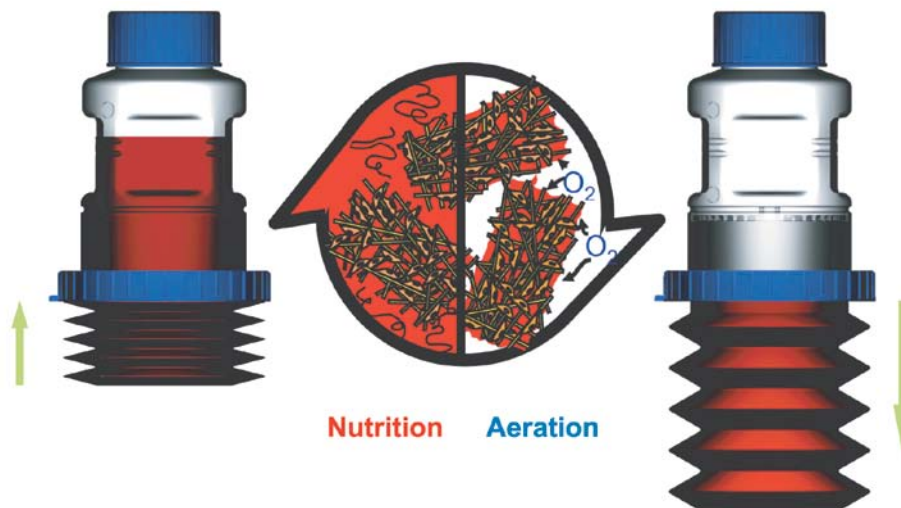
BelloCell® bioreactor consists of two components: a sterile, single-use culture BelloCell® bottle and a bellow compressor BelloStage®.

During usage, the BelloCell® bottle is partially filled with media and inoculated with cells.

The media is raised and lowered alternatively to submerge and expose the matrices, creating a dynamic interface between air and media on cell surfaces to maximize nutrient uptake and oxygen transfer.

Because of its high efficiency in nutrient and oxygen transfer, one BelloCell® bottle, with specific surface area of 15,600 cm<sup>2</sup>, is capable of producing cell mass comparable to 20 to 30 roller bottles.

Since the matrix surface is specially treated, BelloCell® can grow many anchorage-dependent cells and allow easy harvest of whole cells, cell components or secreted proteins.



Cells remain entrapped in the disk bed, as the BelloCell® bottle is compressed. The media is forced up through the disk bed, supplying the cells with nutrients and facilitating removal of metabolic waste.

When the BelloStage® platform lowers, the bottle fully expands and the media recedes, exposing carriers to air to facilitate aeration.

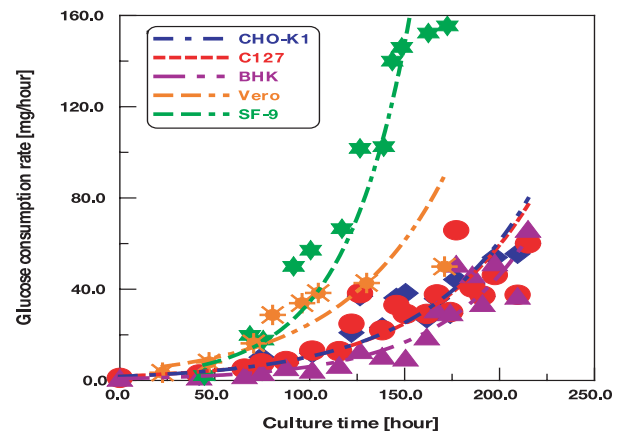
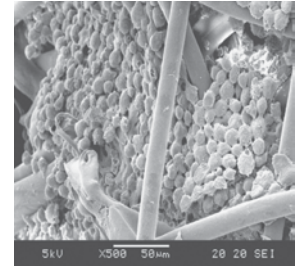
Cells are protected by the disk without interference by the media flow. There are no oxygen limitations or foaming problems.

## FEATURES & ADVANTAGES

- Pre-sterile, ready-to-use, disposable
- Low shear stress, foam-free, no O<sub>2</sub> limitation
- Large surface area for high density cell culture
- Compatible with most serum free media
- Ability to collect whole cells or cell components

## APPLICATIONS

- Mammalian and insect cell culture
- Protein and virus production
- Monoclonal antibody production
- Proteome research
- Drug discovery
- Pharmacokinetics study
- Gene and cell therapy



# BioNOC™ II Cell Culture Microcarrier

*Pure, Light, High S/V, Consistent*

BioNOC™ II are carriers for the growth of animal, mammalian and insect cells. Most anchorage-dependent cells have been successfully grown in BioNOC™ II carriers in both serum-containing and serum-free medium.

BioNOC™ II is made of 100% pure polyester non-woven fabrics according to cGMP guidelines.

The fabric is specially surface-treated to make it hydrophilic and biocompatible. It is then processed through a cutting procedure to form 5 mm wide and 10 mm long strips.

## FEATURES

### Pure

- 100% pure PET non-woven fabrics; regulation friendly
- Non-pyrogenic
- Non-cytotoxic

### Light

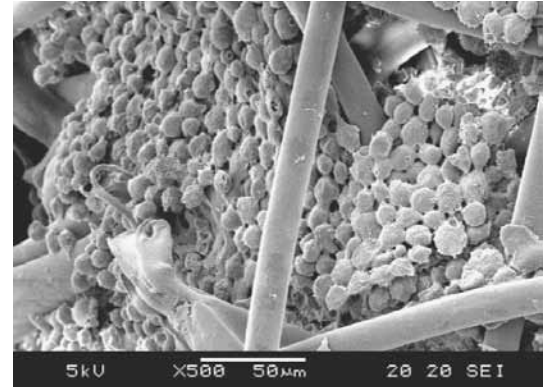
- High cell density (up to  $1 \times 10^9$  cells/g)

### High S/V

- High surface area to volume ratio;  $S/V = 300 \text{ cm}^{-1}$
- High specific surface area ( $2,400 \text{ cm}^2/\text{g}$ )

### Consistent

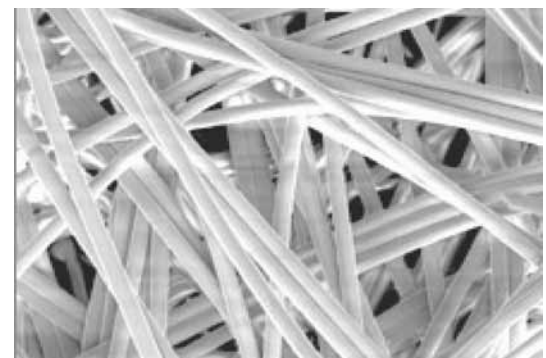
- Novel surface treatment technology with no decay of hydrophilicity
- All materials are manufactured according to cGMP guidelines



SEM figure of Sf-9 cells in BioNOC™ II carriers



BioNOC™ II carriers are specially folded enable sufficient nutrient transfer during cell culture



BioNOC™ II is made by 100% PET fabrics, regulation friendly

## SPECIFICATION

Material	100% PET
Dimension	5 mm x 10 mm strip
Porosity	~94% in packed bed
Specific Surface area	2,400 $\text{cm}^2/\text{g}$
Packed volume	15 ml/g
Autoclavable	(121°C, 30 min in PBS)
Gamma Irradiation	(25 kGy)
Endotoxin Tested (Limulus Ameobocyte Lysate)	(<0.25 EU/ml)
Bioburden	(<1 CFUig)
Cytotoxicity Tested	(serum and serum-free culture test)
Quality control	Bioburden, LAL test, Cytotoxicity, Growth performance according to USP <87><88>, ISO 10993-5

Part Number	Description	Package	Price
CLS-1344-01	BioNOC™ II Cell Culture Carriers	50 g/bt	275.00*
CLS-1346-01	BioNOC™ II Cell Culture Carriers	250 g/bt	1320.00*

\*not subject to discount

**CONTINUOUS CULTURE BOTTLES:**

**BelloCell®-500P:** Designed for adherent cells with general cell culture purpose.

**BelloCell®-500AP:** Designed for harvesting cells or extracting protein virus from the carriers.

**BelloCell®-500DP:** Designed for non-secreted protein, virus or cell harvest with dissolvable carriers.

**BelloCell®-500EP:** Designed for re-use or self-pack customized carriers.

Table 2. Selection guide for continuous bottles

Part Number, Application/Bottles	Secreted Protein, viruses (adherent cells)	Cell Harvest (for non-secreted protein, virus, or cells)	Carrier Harvest (for protein extraction, or re-use carriers)	Suspend cells
CLS-1302-11, BelloCell® -500P	●	●	●	●
CLS-1306-13, BelloCell® -500AP	●	●	●	●
CLS-1310-15, BelloCell® -500EP	●	●	●	●
CLS-1312-16, BelloCell® -500DP	●	●	●	●

● : Best application

● : Applicable, but not optimal

● : Not applicable

Part Number	Cell Culture Bottles	Package	Page #
CLS-1300-10	BelloCell®-500	4/case	Page 6
CLS-1308-14	BelloCell®-500E	4/case	Page 10
CLS-1304-12	BelloCell®-500H	4/case	Page 8
CLS-1302-11	BelloCell®-500P	4/case	Page 7
CLS-1306-13	BelloCell®-500AP	4/case	Page 9
CLS-1310-15	BelloCell®-500EP	4/case	Page 11
CLS-1312-16	BelloCell®-500DP	4/case	Page 12

*A complete product line of BelloCell® meets your special needs*



Various BelloCell® bottles cover 90% of applications in cell culture.

- Semi-batch or continuous culture
- Disposable or Reuseable with the same cell line
- Cesco carriers or your own carriers
- Harvest cells with or without trypsin

With the successful introduction of BelloCell®-500 and BelloCell®-500P HD culture systems since 2004, CESCO keeps developing bottles with specific functions to meet customers' needs in research and production of valuable biological products.

This includes a special dissolvable matrix BioNOC™ D in BelloCell®-500DP bottles, which can be dissolved after cell culture, enabling the harvest of a high quantity of cells, viruses, and non-secreted protein without requiring enzymatic treatment that might injure the valuable products. The modification of BelloCell®-500AP enables the harvest of matrices, enhances cell seeding and virus infection efficiency. (Many features are available in the broad range of BelloCell® bottles.)

## BATCH/SEMI-BATCH CULTURE BOTTLES:

**BelloCell®-500:** Designed for adherent cells with general cell culture purpose.

**BelloCell®-500E:** Designed for re-use or self-pack customized carriers.

**BelloCell®-500H:** Half-packed carriers reducing medium exchange frequency.

Table 1. Selection guide for batch bottles

Part Number, Application/Bottles	Secreted Protein, viruses (adherent cells)	Cell Harvest (for non-secreted protein, virus, or cells)	Carrier Harvest (for protein extraction, or re-use carriers)	Suspend cells
CLS-1300-10, BelloCell® -500	●	●	●	●
CLS-1308-14, BelloCell® -500E	●	●	●	●
CLS-1304-12, BelloCell® -500H	●	●	●	●

● : Best application

● : Applicable, but not optimal

● : Not applicable

# BelloCell®-500 Cell Culture Bottle

BelloCell®-500 was the first bottle available to the market, introducing the new concept of tidal flow for high-density cell culture.

The simple design combines multiple functions of a mixer, oxygenator, and a large growing surface to achieve a high density of cells.

The BelloCell®-500 provides unlimited oxygen during culture with relatively gentle movement of the culture medium. Porous carriers are packed in the bottle that provides 15,600 cm<sup>2</sup> surface area for cell growth.

Its space and labor savings are the most notable features. One BelloCell®-500 is equivalent to dozens of roller bottles, and occupies only 1/20th the space and labor. It is the most user friendly tool for laboratory researchers.

## FEATURES

- High cell density (3~5 x10<sup>9</sup> cells/bottle)
- Capable of harvesting cells and cell components
- Ability to sample carriers for cell count
- Applicable for both serum-free and serum-containing media
- Applicable for most adherent cells
- Super low shear stress
- Foam-free
- No oxygen limitation
- Plug-and-Play
- Pre-sterilized, Ready-to-Use, Disposable



## SPECIFICATION

Dimension	Height 243 mm x Diameter 100 mm
Vent Filter type	0.22 um PTFE membrane with PP support
Working Volume	500 ml
Carriers Volume	865 pcs +/-5%
Carrier type	BioNOC™ II PET macroporous carriers
Material	PETG, LDPE/EVA and PP

## ORDER INFORMATION

Part Number	Description	Package	Price
CLS-1300-10	BelloCell® -500	4/case	800.00*



U.S. and Canada: 1-800-843-1794 • Fax: 1-800-922-4361

# BelloCell®-500P Cell Culture Bottle

BelloCell®-500P is an alternative choice with automatic medium recirculation that does not require manual culture media exchange. It reduces chances of contamination, and maximizes stability by supplying sufficient culture medium.

With the aid of the BelloFeeder® pump, the inlet and outlet ports allow media to flow from and to the associated medium reservoir that provides sufficient nutrient and stable pH during culture.

## FEATURES:

- High cell density (up to  $5 \times 10^9$  cells/bottle)
- Ability to harvest cells and cell components
- Ability to sample carriers for cell count
- Applicable for both serum-free and serum-containing media
- Applicable for most adherent cells
- Super low shear stress
- Foam-free
- No oxygen limitation
- Plug-and-Play
- Pre-sterilized, Ready-to-Use, Disposable
- Enables continuous medium recirculation or perfusion



## SPECIFICATION

Dimension	Height 243 mm x Diameter 100 mm
Vent Filter type	0.22 um PTFE membrane with PP support
Working Volume	500 ml
Carriers Volume	865 pcs +/-5%
Carrier type	BioNOC™ II PET macroporous carriers
Bottle Material	PETG, LDPE/EVA and PP
Inlet Port	Inward-flowing Port: 10 cm silicon tubing with PP female luer connector
Outlet Port	Outward-flowing Port: 10 cm silicon tubing with PP male luer connector

## ORDER INFORMATION

Part Number	Description	Package	Price
CLS-1302-11	BelloCell® -500P	4/case	1040.00*

\*not subject to discount

[www.cglifesciences.com](http://www.cglifesciences.com) • [customer-service@cglifesciences.com](mailto:customer-service@cglifesciences.com)

# BelloCell®-500H Cell Culture Bottle

BelloCell®-500H is designed to pack half the amount of standard carriers. This is designed for users requiring moderate cell density compared to the BelloCell®-500's high cell density capability.

This bottle provides a relative low cost for users compared to the other series of BelloCell®-500 bottles.

## FEATURES

- High cell density (1~2 x10<sup>9</sup> cells/bottle)
- Ability to harvest cells and cell components
- Ability to sample carriers for cell count
- Applicable for both serum-free and serum-containing media
- Applicable for most adherent cells
- Super low shear stress
- Foam-free
- No oxygen limitation
- Plug-and-Play
- Pre-sterilized, Ready-to-Use, Disposable

## SPECIFICATION

Dimension	Height 243 mm x Diameter 100 mm
Vent Filter type	0.22 um PTFE membrane with PP support
Working Volume	500 mL
Carriers Volume	430 pcs +/-5%
Carrier type	BioNOC™ II PET macroporous carriers
Material	PETG, LDPE/EVA and PP



## ORDER INFORMATION

Part Number	Description	Package	Price
CLS-1304-12	BelloCell® -500H	4/case	680.00*

BelloCell®-500AP is designed to remove the lid on the matrix basket allowing for easier collection of the carriers. Inverting the bottle, carriers fall into the cap and provide special functions such as cell seeding, virus infection, transfection, transduction, and cell harvest. (Solid screw cap is provided for this purpose) This is particularly ideal for extracting cellular protein or viruses directly from the carriers.

**MAJOR NOTABLE FEATURES:**

- To increase cell adherence efficiency for certain cell lines that are sensitive to trypsinization by inverting the bottles, especially HEK293
- To enhance virus infection/transfection/transduction efficiency with high virus or plasmid concentration by inverting the bottles.
- To save trypsin solution and increase cell harvest efficiency under sterile condition.

**FEATURES**

- High cell density (3~5 x10<sup>9</sup> cells/bottle)
- Ability to sample carriers for cell count
- Applicable for both serum-free and serum-containing media
- Applicable for most adherent cells
- Super low shear stress
- Foam-free
- No oxygen limitation
- Plug-and-Play
- Pre-sterilized, Ready-to-Use, Disposable



Carriers drop down to the solid top cap when inverting the bottle, this enables several advanced applications for cell culture

**SPECIFICATION**

Dimension	Height 243 mm x Diameter 100 mm
Vent Filter type	0.22 um PTFE membrane with PP support
Working Volume	500 ml
Carriers Volume	865 pcs +/-5%
Carrier type	BioNOC™ II PET macroporous carriers, no lid on the matrix basket
Bottle Material	PETG, LDPE/EVA and PP
Inlet Port	Inward-flowing Port: 10 cm silicon tubing with PP female luer connector
Outlet Port	Outward-flowing Port: 10 cm silicon tubing with PP male luer connector
Cap	Additional solid cap

**ORDER INFORMATION**

Part Number	Description	Package	Price
CLS-1306-13	BelloCell®-500AP	4/case	1050.00*

\*not subject to discount

# BelloCell®-500E Cell Culture Bottle

BioNOC™ II PET macroporous carriers or custom-made matrix PETG, LDPE/EVA and PP BelloCell®-500E is an empty bottle which allows users to load required carriers, scaffolds, plant tissues or CESCO's BioNOC™ II carriers.

Users could autoclave the BioNOC™ II carriers and load the carriers into the bottle under sterile conditions.

This bottle can be re-used by discarding the carriers and rinsing with sterile DI water if it is operated under sterile conditions. The BioNOC™ II carriers are washable, autoclavable and reusable, providing a cost-efficient tool with flexible applications for customers.

## FEATURES

- High cell density
- Ability to harvest cells and cell components
- Ability to sample carriers for cell count
- Allows loading any kinds of matrices, scaffolds, plant tissues or BioNOC™ II carriers
- Applicable for both serum-free and serum-containing media
- Applicable for most adherent cells
- Super low shear stress
- Foam-free
- No oxygen limitation
- Plug-and-Play
- Pre-sterilized, Ready-to-Use, Disposable



BelloCell®-500E is reusable and provides an option for the customer to load required amount of scaffolds or matrices.

## SPECIFICATION

Dimension	Height 243 mm x Diameter 100 mm
Vent Filter type	0.22 um PTFE membrane with PP support
Working Volume	500 ml
Carriers Volume	none
Carrier type	BioNOC™ II macroporous carriers or custom-made matrix
Material	PETG, LDPE/EVA and PP

## ORDER INFORMATION

Part Number	Description	Package	Price
CLS-1308-14	BelloCell®-500E	4/case	505.00*



U.S. and Canada: 1-800-843-1794 • Fax: 1-800-922-4361

BelloCell®-500EP is similarly designed as BelloCell -500E, an empty bottle that allows users to load their own carriers, scaffolds or CESCO's BioNOC™ II carriers. This bottle is designed with inlet and outlet tubes for use with the continuous culture system.

The BelloCell®-500EP can be reused by discarding the carriers and rinsing with sterile D.I. water if it is operated under sterile condition.

## MAJOR NOTABLE FEATURES:

- Economical
- BioNOC™ II carriers are washable, autoclavable and reusable with the same cell line

## FEATURES

- High cell density
- Ability to harvest cells and cell components
- Ability to sample carriers for cell count
- Applicable for both serum-free and serum-containing media
- Applicable for most adherent cells
- Super low shear stress
- Foam-free
- No oxygen limitation
- Pre-sterilized, Ready-to-Use, Disposable



## SPECIFICATION

Dimension	Height 243 mm x Diameter 100 mm
Vent Filter type	0.22 um PTFE membrane with PP support
Working Volume	500 ml
Carriers Volume	none
Carrier type	BioNOC™ II PET macroporous carriers or custom-made matrix
Bottle Material	PETG, LDPE/EVA and PP
Inlet Port	Inward-flowing Port: 10 cm silicon tubing with PP female luer connector
Outlet Port	Outward-flowing Port: 10 cm silicon tubing with PP male luer connector

## ORDER INFORMATION

Part Number	Description	Package	Price
CLS-1310-15	BelloCell®-500EP	4/case	680.00*

\*not subject to discount

# BelloCell®-500DP Cell Culture Bottle

BelloCell®-500DP contains a special dissolvable matrix –BioNOC™ D, that dissolves after cell culture enabling cells to be harvested without requiring enzymatic treatment. Up to  $3 \times 10^9$  cells are achievable in one bottle.

This bottle is particularly suited for applications requiring the harvest of cell mass without the use of enzymatic treatment.

Examples are membrane protein, or virus/vaccine production that are sensitive to trypsin or other extraction reagents.

## FEATURES

- High cell density ( $1 \sim 3 \times 10^9$  cells/bottle)
- Ability to harvest cells and cell components without any Enzymatic treatment
- Ability to sample carriers for cell count
- Applicable for serum-containing culture media ONLY
- Applicable for most adherent cells
- Super low shear stress
- Foam-free
- No oxygen limitation
- Plug-and-Play
- Pre-sterilized, Ready-to-Use, Disposable



$3 \times 10^9$  BHK cells were harvested from one BelloCell®-500DP bottle.



Matrix dissolved and cell mass dislodged from the matrix for harvest after cell culture.

## SPECIFICATION

Dimension	Height 243 mm x Diameter 100 mm
Vent Filter type	0.22 um PTFE membrane with PP support
Working Volume	500 ml
Carriers Volume	689 pcs +/-5%
Carrier type	BioNOC™ D dissolvable macroporous carriers
Bottle Material	PETG, LDPE/EVA and PP
Inlet Port	Inward-flowing Port: 10 cm silicon tubing with PP female luer connector
Outlet Port	Outward-flowing Port: 10 cm silicon tubing with PP male luer connector

## ORDER INFORMATION

Part Number	Description	Package	Price
CLS-1312-16	BelloCell®-500DP	4/case	1090.00*



U.S. and Canada: 1-800-843-1794 • Fax: 1-800-922-4361

**BelloStage®-3000 Machine**

BelloStage®-3000 is capable of operating 4 BelloCell® bottles at a time in a lab-scale 6 cu. ft. incubator.

It is the most compact and user friendly technology for the cell culture industry.



Part Number	Description	Package	Price
CLS-1313-01	BelloStage® -3000 Machine	1 ea. main console 1 ea. control box 1 ea. 100~240V power adapter 1 ea. signal cable 1 ea. CD/Manual	4,000.00*

**BelloCell® High Density Cell Culture System Complete**

The BelloCell® Cell Culture System Complete contains all the necessary elements for users to start cell culture.

It is designed to support four BelloCell® -500 bottles with a 8.6" x 11.7" foot-print and fits inside a standard CO2 incubator.

It contains a BelloStage® console with a magnetized controller, which can be conveniently mounted and accessed from the outside of the incubator.

**FEATURES:**

- Includes a BelloStage® compressor, and necessary accessories
- Extremely compact system fits in most standard CO2 incubators
- Controller with large bright display and large touch panel
- Easy to read and operate
- Suitable for batch or semi-batch operation
- Suitable for most protein and monoclonal antibodies production applications



**ORDER INFORMATION**

Part Number	Description	Package	Price
CLS-1314-02	BelloCell® System Complete	1 ea. BelloStage® -3000 Machine 1 ea. GlucCell Glucose Meter 50 ea. Glucose Test Strips 1ea. CD/Manual	4,300.00*

\*not subject to discount

# BelloCell® Continuous Cell Culture System Complete

The BelloCell® Continuous Cell Culture System Complete provides the similar features as BelloCell® Cell Culture System Complete but with additional BelloFeeder® pump and tubing sets to provide continuous media exchange in the BelloCell®-500P bottles.

Each BelloCell®-500P bottle has additional inlet and outlet line for media recirculation.

Each bottle can link to an extra glass media vessel (not included) and provide continuous exchange of nutrient, eliminating the need for media exchange and avoiding possible shock to the cells during culture.

## FEATURES

- Each package contains a BelloStage®-3000 compressor. BelloFeeder® pump module, two complete tubing sets and accessories.
- Each bottle connects with an independent media reservoir to eliminate cross-contamination.
- Programmable and ON/OFF pumping control simplifies the setting of recirculation rate for each bottle.
- One BelloFeeder® pump module operates up to 3 pump heads with individual micro-processor control.
- Suitable for cell mass production, cell component production, virus production, or protein expression.



## ORDER INFORMATION

Part Number	Description	Package	Price
CLS-1317-01	BelloCell® Continuous System Complete	1 ea. BelloStage®-3000 Machine 1 ea. BelloFeeder®-1300 Pump 2 ea. Tubing Set Complete 1 ea. GlucCell® Glucose Meter 50 ea. Glucose Test Strips 1 ea. CD/Manual	5,500.00*

# GlucCell® Glucose Monitoring System

GlucCell® Glucose Monitoring System speeds and simplifies your glucose measurement during cell culture. GlucCell® Glucose Monitoring System is specially designed for measuring the glucose metabolites during animal cell culture, unlike general diabetes glucose meters on the market that are not applicable for animal cell culture.

This package contains a portable, palm size glucose meter and pre-calibrated, disposable test strips, designed for measuring the glucose concentration during mammalian cell and insect cell culture.

GlucCell® Glucose Monitoring System is intended for use by laboratory researchers or bioreactor professionals to obtain a quantitative measurement of glucose in cell culture media. It is made to meet your needs with calibration-free, maintenance-free, high accuracy, instant, disposable and portable.

## GlucCell® FEATURES

- Suitable for both serum and serum-free culture medium in mammalian and insect cell culture
- Portable, pre-calibrated, ready-to-use, plug & play, and disposable
- 99.5% Correlated with NOVA and YSI biochemical analyzer
- Precision: >95%, Accuracy >90%, Linearity = 0,9997
- Programmable

## SPECIFICATION

Dimension	96 mm x 60 mm x 18.5 mm
Weight	70 g including battery
Power source	CR2032 3V Lithium coin battery X 1
Battery Life	Approximately 1,000 tests
Display	Large LCD
Memory	Store 180 test results with date and time
Automation	Auto electrode inserting detection Auto sample loading detection Auto reaction time count-down/Auto turn-off
Environment	10 - 40° C (50-104° F) , 20-80 RH
Strip size	45 mm x 6 mm x 0.6 mm
Require sample	3-10 ul
Measure range	30-550 mg/dl (1.6-30.6 mmol/L)
Test result time	15 seconds

## ORDER INFORMATION

Part Number	Description	Package	Price
CLS-1322-02	GlucCell® Glucose Monitoring System	1 ea. GlucCell® Glucose Meter 2 ea. bottles, each contains 25 strips	330.00*
CLS-1324-01	GlucCell® Glucose Test Strips	2 ea. bottles, each contains 25 strips	55.00*

\*not subject to discount

[www.cglifesciences.com](http://www.cglifesciences.com) • [customer-service@cglifesciences.com](mailto:customer-service@cglifesciences.com)



GlucCell® Monitoring System includes a palm size meter and disposable test strips, enabling instant and accurate reading for glucose monitor during cell culture.



Disposable test strips, 3 ul sample, and palm size meter enable operation in a biosafety cabinet, eliminating the risk of contamination by biohazardous samples.

## BelloFeeder®-1300 Pump Module

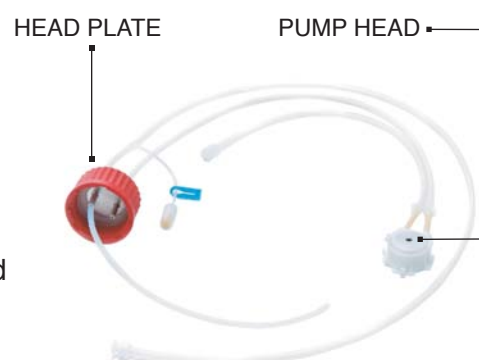
BelloFeeder®-1300 pump module is an auxiliary peristaltic pump to achieve the re-circulation and perfusion processes for BelloCell®-500P high-density continuous cell culture system or other similar cell culture devices.



Part Number	Description	Package	Price
CLS-1320-01	BelloFeeder®-1300 Pump	1 ea. BelloFeeder®-1300 Pump	770.00*

## Tubing Set Complete

Tubing Complete Set includes pre-assembled tubes, reusable pump head and head plate with a sampling port to support the continuous culture in BelloCell®-500P system. It can be autoclaved at 121° C for 30 minutes.



Part Number	Description	Package	Price
CLS-1326-01	Tubing Set Complete	1 ea. Disposable Tubing Kit 1 ea. Pump Head 1 ea. Head Plate	300.00*
CLS-1328-01	Tubing Set with pump head	1 ea. Disposable Tubing Kit 1 ea. Pump Head	200.00*

## Disposable Tubing Accessory Kit

Tubing Kit provides simple options to replace the tubes in the Tubing Complete Set by avoiding a wear out of the tube during operation.

It is recommended to replace the tubes after using it three times.



Part Number	Description	Package	Price
CLS-1330-01	Disposable Tubing Accessory B	5 ea. Disposable Tubing Kit	275.00*

### BelloCell® Bottle Opener

BelloCell® Bottle Opener contains a fixed support, a wrench, two U-shape clamps, one 100mL PE bottle and one 200mL PE bottle.

It is designed to collect carriers from BelloCell® bottles to harvest cell components, intracellular protein or viruses under non-sterile condition.



Part Number	Description	Package	Price
CLS-1340-01	BelloCell® Bottle Opener	1 ea. Fixed Support 1 ea. wrench 2 ea. U-shape clamps 1 ea. 100 mL PE bottle 1 ea. 200 mL PE bottle	300.00*

### Crystal Violet Dye Nucleus Count Kit

Crystal Violet Dye Nuclei Count Kit contains crystal violet dye, citric acid and detergent to disrupt cells and release cell nuclei for cell count.

This provides an efficient reagent for cell count in a porous matrix.



Part Number	Description	Package	Price
CLS-1332-01	Crystal Violet Dye Nucleus Count Kit	Volume: 100 mL/bottle	33.00*

### ADDITIONAL ACCESSORIES

Part Number	Description	Price
CLS-1334-01	BelloCell Dissociation supporter, 4/pkg.	220.00*
CLS-1336-01	Filtered Cap, 6/pkg.	60.00*
CLS-1338-01	Solid Cap, 8/pkg.	25.00*
CLS-1342-01	Forceps	22.00*

\*not subject to discount



3800 North Mill Road  
Vineland NJ 08360  
U.S. and Canada phone:  
1-800-843-1794  
Fax: 1-800-922-4361

03/09

[customer-service@cglifesciences.com](mailto:customer-service@cglifesciences.com)  
[www.cglifesciences.com](http://www.cglifesciences.com)

**CHEMGLASS LIFE SCIENCES IS A WOMAN-OWNED BUSINESS**