

CONTENTS:

| ITEM | PAGE NUMBER |
|------------------------------------|-------------|
| Centrifuge/Coolcube | 11 |
| Centrifuge Tubes | 10 |
| Dishes, Culture | 1 |
| Filters, Syringe..... | 7 |
| Filter Systems..... | 8 |
| Filtration..... | 9 |
| Flasks, Culture..... | 2 |
| Flasks, Erlenmeyer | 18 |
| Incubator | 3 |
| Inoculating Loops..... | 6 |
| Pipet Controller | 13 |
| Pipet Reservoirs | 16-17 |
| Pipets, Aspirating | 14-15 |
| Pipets, Serological..... | 14-15 |
| Plates, 3D Cell Culture | 4-5 |
| Plates, Tissue Culture..... | 6 |
| Shaker Temperature Controlled..... | 12 |

**PLEASE CALL
FOR YOUR
ACCOUNT SPECIFIC
DISCOUNT**

Ordering & General Information

Discounts / Prices / Terms

Prices in this catalog are list prices and they are current at the time of posting. Please call for your discount. NOTE: All prices are subject to change without notice.

Shipments

Most of the items listed in this catalog are in stock and available for immediate shipment. In the event that your order cannot be filled completely, a partial shipment will be made with the backordered items shipped shortly. Unless otherwise instructed we will ship UPS or FedEx. NOTE: If you desire your order sent in one shipment, please specify this when placing your order.

Returns

Please do not return any material without our consent. If any material is to be returned, please contact us at 1-800-843-1794 to receive authorization. Chemglass Life Sciences cannot be responsible for material returned without our permission.

Shortages

In the event that the quantity and/or material received does not agree with the items ordered, notify us immediately. NOTE: Claims or shortages must be made within 10 working days of receipt of shipment.

Specifications

Photographs and illustrations in this catalog represent the products as described in the text and as specified by the dimensions provided. Chemglass Life Sciences reserves the right to modify or change these specifications if warranted.

Trademarks

The following are trademarks of Chemglass Life Sciences Inc.: CHEMGLASS LIFE SCIENCES

Other registered trademarks in this catalog:

CELLTREAT® – CELLTREAT; DUOCAP™ – TRIFOREST; LAZY-L™ – EXCEL SCIENTIFIC;

INCUSHAKE™, MAGICLAMP™, MULTI-THERM™, and COOLCUBE™ – BENCHMARK; DILUX™ – DILUX CORP.

CHEMGLASS LIFE SCIENCES ACCEPTS:



3800 North Mill Road, Vineland NJ 08360
U.S. and Canada phone: 1-800-843-1794 • Fax: 1-800-922-4361
customer-service@cglifesciences.com • www.cglifesciences.com

CLS-1805 TISSUE CULTURE DISHES

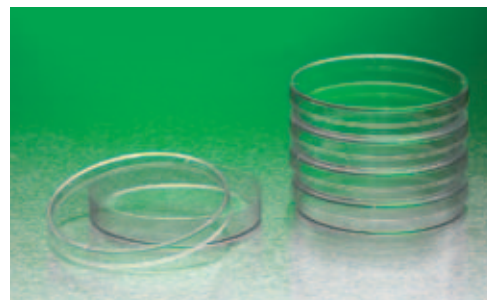
CELLTREAT® tissue culture dishes and plates are manufactured under the most stringent conditions in order to ensure the integrity of your tissue and cell culture work. The class 100,000 clean room, USP class VI virgin polystyrene, and ISO 9001:2000 quality management systems all contribute to the consistent tissue and cell culture performance of our products.

The tissue culture surface treatment used for CELLTREAT® products produces a negatively charged, hydrophilic surface for consistent cell attachment. Growth surfaces are flat and free from striation to maximize usable growth area and transparency.

Dishes are available in four sizes; 35mm, 70mm, 90mm and 150mm. Uniformly molded plastic bottoms provide a distortion free surface for consistent cell attachment. All dishes are supplied with lids. Lids contain molded spacers to provide consistent gas exchange and stacking rings that add stability for handling tall stacks of dishes.

CELLTREAT® 150mm tissue culture dishes may now be purchased in a multipack, containing five dishes per pack. The individual pack option is still available.

The 35mm, 70mm and 90mm dishes are packaged in easy opening, sterile, re-sealable (zip-closure) bags. The 150mm dishes are individually packaged in easy opening, sterile bags. Lot numbers are printed on all bags.



| Part Number | Description | Qty./Case | Price |
|---------------------|---|------------|-----------------|
| CLS-1805-035 | Dish, Tissue Culture Treated, 35mm | 500 | 198.00 ◇ |
| CLS-1805-070 | Dish, Tissue Culture Treated, 70mm | 500 | 235.00 ◇ |
| CLS-1805-090 | Dish, Tissue Culture Treated, 90mm (100mm) | 500 | 355.00 ◇ |
| CLS-1805-150 | Dish, Tissue Culture Treated, 150mm | 60 | 125.00 ◇ |
| CLS-1805-154 | Dish, Tissue Culture Treated, 150mm, 5/Bag | 100 | 190.00 ◇ |

CLS-1805-152 TISSUE CULTURE DISH WITH GRIPPING RING

The CELLTREAT® tissue culture dish with gripping ring has a gripping ring around the dish base. The serrated ring extends slightly beyond the lid and significantly improves handling over traditional designs. The gripping ring allows the dish to be handled by the dish base preventing accidental drops and simplifying the separation of the lid from the base. The dish also includes numerical clock locators (3, 6, 9, and 12) molded into the base for easy division of the dish into quadrants, molded spacers for consistent gas exchange and stacking rings for stability when handling tall stacks of dishes. It is manufactured using the same quality materials and manufacturing processes used in CELLTREAT® traditional style tissue culture dishes. 10 dishes per re-sealable pack.

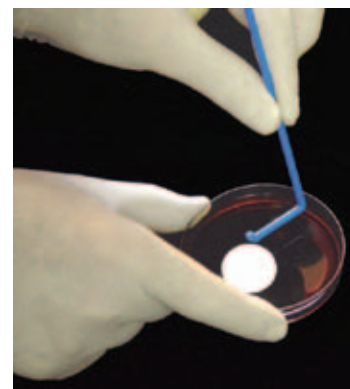


| Part Number | Description | Qty./Case | Price |
|---------------------|--|------------|-----------------|
| CLS-1805-060 | Dish, Tissue Culture Treated, 60mm, with Gripping Ring | 500 | 230.00 ◇ |
| CLS-1805-152 | Dish, Tissue Culture Treated, 100mm, with Gripping Ring | 300 | 210.00 ◇ |

CLS-1352 SPREADER, LAZY-L

Lazy-L Spreaders™ are disposable, microbiological spreaders that provide an economical alternative to bending glass rods or pipettes for spreading samples on agar surfaces and filters in Petri dishes. They are supplied sterile; no need to flame sterilize or autoclave.

- Unlike glass spreaders, durable polystyrene Lazy-L Spreaders™ are non-breakable and pose no safety hazard
- L-Shaped for convenient “lazy” spreading; just turn the Petri dish for smooth, even sample distribution
- Smooth spreading surface and a slight upward turn reduce the chance that the spreader will dig into agar
- Packaged in pre-sterilized pouches of one or ten each
- Pre-sterilization eliminates flaming or autoclaving and reduces risk of contamination
- No more time spent bending glass rods or waiting for glass or metal spreaders to cool before use



PACKED IN CASE QUANTITIES OF 500 PIECES

| Part Number | Description | Case Price |
|---------------------|---|-----------------|
| CLS-1352-001 | Lazy-L Spreader, 1/Bag (individually packaged) | 100.00 ◇ |
| CLS-1352-002 | Lazy-L Spreader, 10/Bag | 65.00 ◇ |



CLS-2408 SUSPENSION CULTURE FLASKS

CELLTREAT® suspension and tissue culture flasks are manufactured in accordance with ISO 9001:2000 quality management systems, with USP class VI materials, in a class 100,000 clean room. This attention to quality and detail ensures the performance and consistency you demand for your cell and tissue culture work.

CELLTREAT® flask surfaces are flat and free from striations to provide improved transparency. An innovative angled neck design offers excellent pipette and cell scraper access. Flasks include engraved graduations on two sides and ridges for easy stacking.

Suspension culture flasks are not tissue culture treated. The surface is hydrophobic and does not facilitate cell attachment. Flasks are available in four sizes: 25mL (12.5cm²), 50mL (25cm²), 250mL (75cm²) and 600mL (182cm²). Flasks are provided with vent caps that contain a 0.22 µm hydrophobic membrane filter to allow gas exchange and minimize the risk of contamination. All suspension culture flasks are supplied sterile (gamma irradiated).

All Flasks are packaged in bags that are easy to open, sterile and re-sealable (zip-closure). Lot numbers are printed on all bags.

| Part Number | Flask Description | Cap Style | Qty/ Pack | Qty/ Case | Price/ Case |
|---------------------|--|-------------|-----------|------------|-----------------|
| CLS-2408-125 | Suspension Culture Flask, 25mL | Vent | 10 | 200 | 216.00 ◊ |
| CLS-2408-250 | Suspension Culture Flask, 50mL | Vent | 10 | 200 | 236.00 ◊ |
| CLS-2408-750 | Suspension Culture Flask, 250mL | Vent | 5 | 100 | 216.00 ◊ |
| CLS-2408-182 | Suspension Culture Flask, 600mL | Vent | 5 | 40 | 178.00 ◊ |

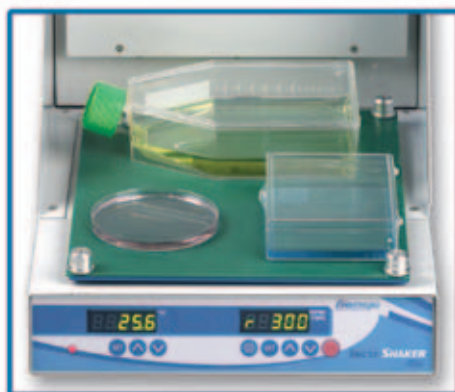


CLS-2406 TISSUE CULTURE FLASKS

The tissue culture surface treatment used for CELLTREAT® products creates a negatively charged hydrophilic surface ideal for consistent cell attachment. Growth surfaces are flat and free from striation to maximize usable growth area and transparency.

Flasks are available in four sizes: 12.5cm², 25cm², 75cm² and 182cm² with two cap styles. Plug seal caps can provide a closed system or allow gas exchange with a one quarter turn of the cap. Vent caps contain a 0.22µm hydrophobic membrane filter to allow gas exchange and minimize the risk of contamination.

| Part Number | Growth Area | Flask Cap Style | Flask Volume | Qty/ Pack | Qty/ Case | Price/ Case |
|---------------------|---------------------------|------------------|--------------|-----------|------------|-----------------|
| CLS-2406-125 | 12.5cm² | Vent | 25mL | 10 | 200 | 250.00 ◊ |
| CLS-2406-250 | 25cm² | Vent | 50mL | 10 | 200 | 260.00 ◊ |
| CLS-2406-750 | 75cm² | Vent | 250mL | 5 | 100 | 260.00 ◊ |
| CLS-2406-182 | 182cm² | Vent | 600mL | 5 | 40 | 185.00 ◊ |
| CLS-2405-125 | 12.5cm² | Plug Seal | 25mL | 10 | 200 | 220.00 ◊ |
| CLS-2405-250 | 25cm² | Plug Seal | 50mL | 10 | 200 | 230.00 ◊ |
| CLS-2405-750 | 75cm² | Plug Seal | 250mL | 5 | 100 | 240.00 ◊ |
| CLS-2405-182 | 182cm² | Plug Seal | 600mL | 5 | 40 | 175.00 ◊ |



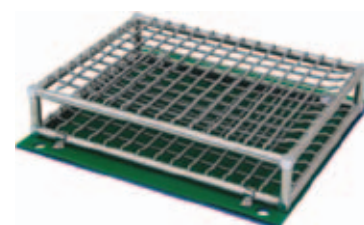
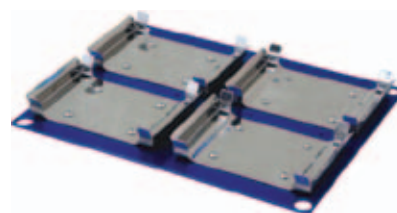
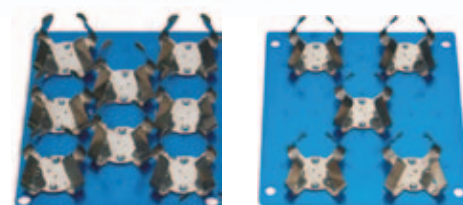
CLS-2543 INCUBATOR, MINI, INCU-SHAKE™

The new Incu-Shake™ Mini is the most compact shaking incubator in its class. Despite the remarkably small footprint, a large 11.5 x 9.5 inch workspace accepts several platforms for use with a variety of flasks, tubes and other common vessels.

The standard included platform features a non-slip, rubber-coated surface, ideal for tissue culture flasks, Petri dishes and staining trays.

The convenient MAGic Clamp™ platform is also available for use with Erlenmeyer flasks and test tube racks. The unique, magnetic attachment method is the easiest way to instantly change between flask clamps of different sizes.

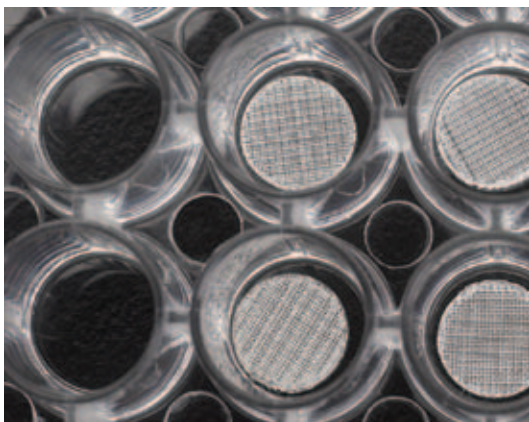
Temperature, shaking speed and run time are displayed on the large LED control panel located on the front of the unit. The integral microprocessor includes a constant monitoring system that ensures accuracy through the duration of the program. Sophisticated temperature and over-speed controls ensure long life, safety and sample integrity.



SPECIFICATIONS:

| | |
|------------------------|--|
| Temperature Range | Ambient +5° to 60°C (0.1°C Increments) |
| Temperature Uniformity | ± 0.25% |
| Temperature Accuracy | ± 0.1% |
| Shaking Speed Range | 30 to 300 rpm (Increments of 1 rpm) |
| Motion/Orbit | Horizontally Circular/19mm |
| Platform Dimensions | 11.5 x 9.5" |
| Exterior Dimensions | 15.7 x 11 x 10.5" (L x W x D) |
| Weight | 25lbs |
| Electrical | 120V or 230V, 50-60Hz, 200W |

| Part Number | Description | Price |
|---------------------|--|------------------|
| CLS-2543-001 | Incubator, Mini, Incu-Shake™, w/Non-Slip Rubber Mat, 120V | 2,395.00* |
| CLS-2543-230 | Incubator, Mini, Incu-Shake™, w/Non-Slip Rubber Mat, 230V | 2,395.00* |
| CLS-2543-003 | MAGic Clamp™ Universal Platform | 195.00* |
| CLS-2543-125 | Clamps for MAGic Platform, 125mL (max 12) | 22.00* |
| CLS-2543-250 | Clamps for MAGic Platform, 250mL (max 8) | 24.00* |
| CLS-2543-500 | Clamps for MAGic Platform, 500mL (max 5) | 25.00* |
| CLS-2543-005 | Tube Rack, 12x50 and 21x15mL Conical Tubes | 89.00* |
| CLS-2543-007 | Platform, Dedicated 5 x 500mL Flask Clamps | 259.00* |
| CLS-2543-009 | Platform, Dedicated 8 x 250mL Flask Clamps | 259.00* |
| CLS-2543-011 | Platform, Dedicated 12 x 125mL Flask Clamps | 259.00* |
| CLS-2543-013 | Platform, Dedicated with 4 Microplates | 465.00* |
| CLS-2543-015 | Platform, Spring Rack for Uncommon Vessels | 445.00* |

**CLS-3505 & CLS-3507****CELL CULTURE EVALUATION & RESEARCH PLATES**

CELLTREAT® 3D cell cultures plates are available with Polystyrene (PS) Inserts for routine cell culture, drug discovery studies, cancer models and stem cell research or Polycaprolactone (PCL) Inserts, a biodegradable polymer, for applications including tissue engineering and animal implantation.

FEATURES OF PS AND PCL 3D CELL CULTURE PLATES:**Pre-Sterilized and Ready to Use**

3D Insert™-PCL scaffolds are packaged into wells of tissue culture plates and terminally sterilized using gamma radiation. PCL Scaffolds are available in pre-packaged tissue culture plates ranging from 6-well to 96-well.

100% Connectivity

The pores of the products are 100% open, making it easy for cells to be seeded throughout the porous scaffolds and the nutrient and cell metabolic waste to be exchanged. This feature makes the products especially useful in conducting dynamic cultures where the medium can perfuse through the 100% open porous structure.

Well Defined Pore Size and Porous Structure

3D Insert™-PCL scaffolds precision micro-fabrication technology produces a well-defined pore size and ensures the reproducibility of the porous structure from batch to batch.

Improved Cell Culture Efficiency

3D Insert™-PCL scaffolds have increased surface areas as compared to 2D cell culture plates. There, more cells can be cultured using the same size cell culture dish, plate, flask, bioreactor, etc.

Easy Separation of Cytokines and Growth Factors Secreted by Cultured Cells

3D cell culture scaffolds will not absorb cytokines and growth factors. Therefore, cytokines and growth factors, which are secreted by cultured cells during 3D culture, can be easily separated or recovered from the culture medium without going through any extra separation steps.

3D Insert™-PS Scaffolds are ideal for daily 3D cell culture applications. By utilizing our 3D Insert™-PS, you can turn an ordinary 2D monolayer cell culture into a novel 3 dimensional cell culture environment, enhancing routine cell culture, drug discovery, cancer models and stem cell differentiation.

ADDITIONAL FEATURES OF 3D INSERT™-PS CELL CULTURE PLATES:**Easy Imaging and Monitoring Cell Growth**

3D Insert™-PS scaffolds are made from polystyrene, the same material as the traditional tissue culture plates. The combination of transparency of the material and the porous structure design makes it possible to monitor cell growth under an inverted light microscope.

Mechanically Strong and Easy to Handle

3D Insert™-PS scaffolds are mechanically strong. Therefore, they are easy to handle and manipulate when needed.

Free of Animal Derived Material

The PS scaffolds are made from 100% synthetic polymer with consistent quality to ensure experimental reproducibility when using different batches of 3D Insert™-PS.

Compatible with Most 2D Cell Culture Protocols, Including Trypsin Digestion Protocol

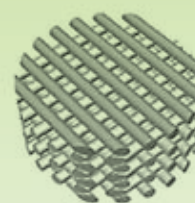
Cells cultured in non-degradable scaffolds can be assayed using most 2D cell culture assay protocols. Cultured cells can be easily harvested using the same trypsin digestion protocol as in the 2D cell culture.

3D CELL CULTURE EVALUATION PLATES (PACKAGE 1/CASE):

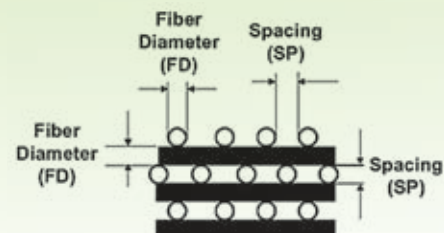
| Part Number | Description | 3D Insert Type | Fiber Dia. | Fiber Spacing | Price |
|--------------|-----------------------------------|----------------|------------|---------------|----------|
| CLS-3505-001 | 12-Well Plate w/ 4 PS Scaffolds | PS | 150µm | 200µm | 67.70 ♣ |
| CLS-3505-003 | 96-Well Plate w/ 12 PS Scaffolds | PS | 300µm | 300µm | 67.70 ♣ |
| CLS-3505-005 | 12-Well Plate w/ 4 PCL Scaffolds | PCL | 300µm | 300µm | 132.30 ♣ |
| CLS-3505-007 | 96-Well Plate w/ 12 PCL Scaffolds | PCL | 300µm | 300µm | 132.30 ♣ |

3D CELL CULTURE RESEARCH PLATES (PACKAGE 1/CASE):

| Part Number | Description | 3D Insert Type | Fiber Dia. | Fiber Spacing | Price |
|--------------|-----------------------------------|----------------|------------|---------------|----------|
| CLS-3507-001 | 6-Well Plate w/ 3 PS Scaffolds | PS | 150µm | 200µm | 126.15 ♣ |
| CLS-3507-003 | 6-Well Plate w/ 3 PS Scaffolds | PS | 300µm | 400µm | 126.15 ♣ |
| CLS-3507-005 | 12-Well Plate w/ 6 PS Scaffolds | PS | 150µm | 200µm | 126.15 ♣ |
| CLS-3507-007 | 12-Well Plate w/ 6 PS Scaffolds | PS | 300µm | 400µm | 126.15 ♣ |
| CLS-3507-009 | 24-Well Plate w/ 12 PS Scaffolds | PS | 150µm | 200µm | 126.15 ♣ |
| CLS-3507-011 | 24-Well Plate w/ 12 PS Scaffolds | PS | 300µm | 400µm | 126.15 ♣ |
| CLS-3507-013 | 96-Well Plate w/ 24 PS Scaffolds | PS | 150µm | 200µm | 126.15 ♣ |
| CLS-3507-015 | 96-Well Plate w/ 24 PS Scaffolds | PS | 300µm | 400µm | 126.15 ♣ |
| CLS-3507-017 | 6-Well Plate w/ 3 PCL Scaffolds | PCL | 300µm | 300µm | 261.50 ♣ |
| CLS-3507-019 | 6-Well Plate w/ 3 PCL Scaffolds | PCL | 300µm | 500µm | 261.50 ♣ |
| CLS-3507-021 | 12-Well Plate w/ 6 PCL Scaffolds | PCL | 300µm | 300µm | 261.50 ♣ |
| CLS-3507-023 | 12-Well Plate w/ 6 PCL Scaffolds | PCL | 300µm | 500µm | 261.50 ♣ |
| CLS-3507-025 | 24-Well Plate w/ 12 PCL Scaffolds | PCL | 300µm | 300µm | 261.50 ♣ |
| CLS-3507-027 | 24-Well Plate w/ 12 PCL Scaffolds | PCL | 300µm | 500µm | 261.50 ♣ |
| CLS-3507-029 | 96-Well Plate w/ 24 PCL Scaffolds | PCL | 300µm | 300µm | 261.50 ♣ |
| CLS-3507-031 | 96-Well Plate w/ 24 PCL Scaffolds | PCL | 300µm | 500µm | 261.50 ♣ |



3D Insert™ Structure



3D Insert™ Structure Parameters



CLS-3500 TISSUE CULTURE PLATES

CELLTREAT® tissue culture plates are available in 6, 12, 24, 48 and 96 well configurations. Each well is labeled with large alpha-numeric markings for easy identification. Each well has a raised rim which nests into the rings on the single direction lid to reduce evaporation and limit the risk of cross contamination. The lid also features an exterior stacking ring for added stability when handling tall stacks of plates. All plates are packaged in paper/plastic peel pouches that are designed to keep the plates in pristine condition during transit. The lot number is printed on each pouch. All tissue culture plates are supplied sterile (gamma irradiated) and include lids. The shapes of the wells are round with a flat bottom.

| Part Number | Description | Cell Growth Area/Well | Qty/ Pack | Qty/ Case | Price/ Case |
|--------------|------------------------------|-----------------------|-----------|-----------|-------------|
| CLS-3500-006 | Tissue Culture Plate 6 Well | 9.60cm ² | 1 | 100 | 190.00◇ |
| CLS-3500-012 | Tissue Culture Plate 12 Well | 3.85cm ² | 1 | 100 | 210.00◇ |
| CLS-3500-024 | Tissue Culture Plate 24 Well | 1.93cm ² | 1 | 100 | 240.00◇ |
| CLS-3500-048 | Tissue Culture Plate 48 Well | 0.84cm ² | 1 | 100 | 260.00◇ |
| CLS-3500-096 | Tissue Culture Plate 96 Well | 0.33cm ² | 1 | 100 | 280.00◇ |
| CLS-3500-596 | Tissue Culture Plate 96 Well | 0.33cm ² | 5 | 100 | 250.00◇ |



CLS-1760 COVER SLIP, ROUND, GERMAN GLASS, #1 THICKNESS

Cover slips are manufactured from the highest quality borosilicate hydrolytic class 1 German glass. They have excellent resistance to chemicals and are ideal for neural tissue culture and hard-to-attach cells. These cover slips are exceptional for florescence and confocal microscopy. Sold in packages of 1oz.

Please Note:

12mm Diameter will fit in a 24 well plate; CLS-3500-024

15mm Diameter will fit in a 12 well plate; CLS-3500-012

25mm Diameter will fit in a 6 well plate; CLS-3500-006

| Part Number | Description | Approx. Case Qty | Price |
|--------------|-------------------------------------|------------------|--------|
| CLS-1760-012 | 12mm Dia., Cover Slip, German Glass | 650 | 75.50◇ |
| CLS-1760-015 | 15mm Dia., Cover Slip, German Glass | 378 | 66.00◇ |
| CLS-1760-025 | 25mm Dia., Cover Slip, German Glass | 160 | 40.00◇ |

INOCULATING LOOPS



CLS-2458 INOCULATING LOOPS AND NEEDLES, STERILE

Loops and needles are made from high quality polypropylene and are available in 3 styles: needle, 1µl loop and 10µl loop. The stems are flexible and can be bent to access small volume tubes and dishes. Color coded for easy identification. The surface of the loops and needles are vacuum-gas plasma treated. Packaged in peel-to-open paper/plastic wrappers. Product is sterile (gamma irradiated).

| Part Number | Description | Qty/ Bag | Qty/ Case | Price/ Case |
|--------------|---|----------|-----------|-------------|
| CLS-2458-001 | 1µl Inoculating Loop, White | 20 | 2,000 | 140.00◇ |
| CLS-2458-010 | 10µl Inoculating Loop, Blue | 20 | 2,000 | 145.00◇ |
| CLS-2458-015 | Inoculating Needle, Yellow | 20 | 2,000 | 145.00◇ |
| CLS-2458-002 | 1µl Inoculating Loop, White, Individually Wrapped | 1 | 600 | 57.40◇ |
| CLS-2458-012 | 10µl Inoculating Loop, Blue, Individually Wrapped | 1 | 600 | 57.40◇ |
| CLS-1802-001 | Petri Dish, nontreated, 90mm (100mm) Sterile | 1 | 500 | 135.00◇ |

CLS-2005 SYRINGE FILTERS

CGLS Syringe Filters are high quality filters, packaged in sterile blister packs and offered at a very competitive price. The standard range of filters are available in PVDF (Polyvinylidene Fluoride), PES (Polyethersulfone), MCE (mixed Cellulose Ester), Nylon and PTFE.

All filters are designed with Female Luer-Lock inlets and Male Luer-Lock outlets. Gamma sterilized, non-pyrogenic and RNA/DNA-Free. The housings are made of SBS.

| Part Number | Membrane Material | Membrane Size (µm) | Filter Dia. (mm) | Case Qty | Price |
|--------------|-------------------|--------------------|------------------|----------|---------|
| CLS-2005-001 | PVDF | 0.10 | 13 | 75 | 44.71 ◊ |
| CLS-2005-003 | PVDF | 0.10 | 30 | 30 | 36.92 ◊ |
| CLS-2005-005 | PVDF | 0.22 | 13 | 75 | 44.71 ◊ |
| CLS-2005-007 | PVDF | 0.22 | 30 | 30 | 36.92 ◊ |
| CLS-2005-009 | PVDF | 0.45 | 13 | 75 | 44.71 ◊ |
| CLS-2005-011 | PVDF | 0.45 | 30 | 30 | 36.92 ◊ |
| CLS-2005-013 | PES | 0.22 | 13 | 75 | 44.71 ◊ |
| CLS-2005-015 | PES | 0.22 | 30 | 30 | 36.92 ◊ |
| CLS-2005-017 | PES | 0.45 | 13 | 75 | 44.71 ◊ |
| CLS-2005-019 | PES | 0.45 | 30 | 30 | 36.92 ◊ |
| CLS-2005-021 | MCE | 0.22 | 13 | 75 | 44.71 ◊ |
| CLS-2005-023 | MCE | 0.22 | 30 | 30 | 36.92 ◊ |
| CLS-2005-025 | MCE | 0.45 | 13 | 75 | 44.71 ◊ |
| CLS-2005-027 | MCE | 0.45 | 30 | 30 | 36.92 ◊ |
| CLS-2005-029 | Nylon | 0.45 | 13 | 75 | 44.71 ◊ |
| CLS-2005-031 | Nylon | 0.45 | 30 | 30 | 36.92 ◊ |
| CLS-2005-033 | PTFE | 0.22 | 13 | 75 | 75.00 ◊ |
| CLS-2005-035 | PTFE | 0.22 | 25 | 30 | 51.35 ◊ |
| CLS-2005-037 | PTFE | 0.45 | 13 | 75 | 75.00 ◊ |
| CLS-2005-039 | PTFE | 0.45 | 25 | 30 | 51.35 ◊ |



PVDF – Extremely low protein-binding; for filtration of non-aggressive aqueous and mild organic solutions, or where maximizing protein recovery is important.

- Gas Filtration
- Vapor Filtration
- High Temperature Filtration

PES – Low affinity for proteins and extractable with substantially faster flow rates than PVDF; suitable for pre-filtration and filtration of buffers and culture media.

- Sterile Filtering Protein Solution
- Tissue Culture Media Filtration
- Tissue Culture Additive Filtration

MCE – Filtration of aqueous solutions; effectively binds trace proteins.

- Oil particulate and bacteria filtration and then inspect them
- Alcohol particulate and bacteria filtration and then inspect them
- Other solvent particulate and bacteria filtration and then inspect them

NYLON – Universal application for analytical procedures.

- Chemical Filtration
- Beverage Filtration

PTFE – Designed to bring the highest levels of performance and purity to your research.

- Organic Solvent with Strong Chemical Causticity Filtration
- Strong Acid Solvent Filtration
- Alkali Solvent Filtration

CLS-2009 VACUUM FILTER SYSTEMS, BOTTLE TOP

Vacuum filter systems can be used for large volume separation and purification. CELLTREAT® bottle top filtration systems are manufactured in a Class 100,000 clean room from USP class VI virgin polystyrene. They utilize a polyethersulfone (PES) membrane material in 0.22µm or .45µm pore sizes for rapid flow rate and low protein bonding. The filter units are available in 150, 250, 500 and 1000mL sizes and are individually packaged in easy-to-open plastic bags with individually wrapped caps. Gamma irradiation sterilized and non-pyrogenic.



| Funnel Capacity (mL) | Filter O.D. (mm) | Working Volume (mL) | Hold-Up Volume (mL) |
|----------------------|------------------|---------------------|---------------------|
| 150 | 50 | 150 | 3 |
| 250 | 50 | 250 | 3 |
| 500 | 70 | 500 | 3 |
| 1000 | 90 | 1000 | 3 |

| Part Number | Description | Qty/ Bag | Qty/ Case | Price/ Case |
|---------------------|---|----------|-----------|----------------|
| CLS-2009-009 | Filter System, 150mL, PES, 0.45µm | 1 | 12 | 78.00◇ |
| CLS-2009-001 | Filter System, 250mL, PES, 0.45µm | 1 | 12 | 84.00◇ |
| CLS-2009-003 | Filter System, 500mL, PES, 0.45µm | 1 | 12 | 122.00◇ |
| CLS-2009-013 | Filter System, 1000mL, PES, 0.45µm | 1 | 12 | 170.00◇ |
| CLS-2009-011 | Filter System, 150mL, PES, 0.22µm | 1 | 12 | 80.00◇ |
| CLS-2009-005 | Filter System, 250mL, PES, 0.22µm | 1 | 12 | 86.00◇ |
| CLS-2009-007 | Filter System, 500mL, PES, 0.22µm | 1 | 12 | 124.00◇ |
| CLS-2009-015 | Filter System, 1000mL, PES, 0.22µm | 1 | 12 | 172.00◇ |
| CLS-2010-001 | Bottle Top Filter, 150mL, PES, 0.45µm | - | 24 | 105.00◇ |
| CLS-2010-003 | Bottle Top Filter, 250mL, PES, 0.45µm | - | 24 | 125.00◇ |
| CLS-2010-005 | Bottle Top Filter, 500mL, PES, 0.45µm | - | 24 | 155.00◇ |
| CLS-2010-013 | Bottle Top Filter, 1000mL, PES, 0.45µm | 1 | 24 | 230.00◇ |
| CLS-2010-007 | Bottle Top Filter, 150mL, PES, 0.22µm | - | 24 | 106.00◇ |
| CLS-2010-009 | Bottle Top Filter, 250mL, PES, 0.22µm | - | 24 | 126.00◇ |
| CLS-2010-011 | Bottle Top Filter, 500mL, PES, 0.22µm | - | 24 | 156.00◇ |
| CLS-2010-015 | Bottle Top Filter, 1000mL, PES, 0.22µm | 1 | 24 | 232.00◇ |

CLS-1152 STERILE SOLUTION BOTTLE

CELLTREAT® Solution Bottles are ideal for storage of media, buffers, and other aqueous solutions. The bottles are manufactured from polystyrene, are sterile (gamma irradiated) and available in 150, 250, 500 and 1000mL volumes and are packaged in individual easy to open plastic bags. The Solution Bottles feature heavy wall construction, engraved graduations, a concave shape and knurled cap for easy handling.

| Part Number | Description | Case Qty | Price |
|----------------------|---------------------------------------|-----------|----------------|
| CLS-1152-0150 | 150mL Sterile Solution Bottle | 24 | 47.00 ◊ |
| CLS-1152-0250 | 250mL Sterile Solution Bottle | 24 | 52.00 ◊ |
| CLS-1152-0500 | 500mL Sterile Solution Bottle | 24 | 75.00 ◊ |
| CLS-1152-1000 | 1000mL Sterile Solution Bottle | 24 | 95.00 ◊ |

**CLS-2090 FILTER ADAPTER, 45MM TO 38-430 GPI**

Filter adapters are especially designed to fit CELLTREAT® bottle top filters. Our adapters provide the freedom to attach to bottles and flasks of various fill capacities and provide utility to existing 38-430mm closure. The adapters are autoclavable, reusable, and cost-effective. They eliminate the need to transfer product to Erlenmeyer flasks.

| Part Number | Description | Pkg Qty | Price |
|----------------------|---|----------|----------------|
| CLS-2090-4538 | Filter Adapter, 45mm to 38-430 GPI | 3 | 29.00 ◊ |

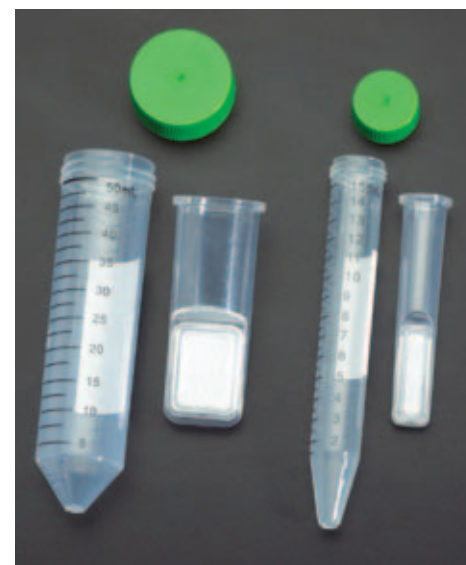


*SEE PAGE 18 FOR FLASK LISTING

CLS-2015 ULTRA FILTRATION TUBES, MOLECULAR WEIGHT CUT OFF, STERILE

CELLTREAT® MWCO Ultra Filtration Systems include CELLTREAT® 15mL or 50mL centrifuge tubes and a MWCO filtration insert in 5,000, 10,000, or 100,000 Molecular Weight Cut Off pore sizes. CELLTREAT® Ultra Filtration Systems are manufactured in a class 100,000 clean room and made of high clarity polypropylene. The tubes contain high recovery cellulose membranes with concentration factors of 80-100X. The housing is translucent with volume graduations for easy sample monitoring. Samples are easily accessed in the tube, eliminating steps to recover concentrate. Applications for MWCO filtration tubes include: concentration of biological samples or proteins, purification of macromolecular components found in cell culture extracts, protein dialysis, size exclusion and protein fractionation.

| Part Number | Description | Pkg Qty | Price |
|---------------------|--|-----------|-----------------|
| CLS-2015-001 | Filtration Tube, 15mL, 5,000 MWCO | 24 | 86.00 ◊ |
| CLS-2015-003 | Filtration Tube, 15mL, 10,000 MWCO | 24 | 86.00 ◊ |
| CLS-2015-005 | Filtration Tube, 15mL, 100,000 MWCO | 24 | 86.00 ◊ |
| CLS-2015-007 | Filtration Tube, 50mL, 5,000 MWCO | 24 | 155.00 ◊ |
| CLS-2015-009 | Filtration Tube, 50mL, 10,000 MWCO | 24 | 155.00 ◊ |
| CLS-2015-011 | Filtration Tube, 50mL, 100,000 MWCO | 24 | 155.00 ◊ |





CLS-4302 CENTRIFUGE TUBES

CELLTREAT® centrifuge tubes are manufactured in a class 100,000 clean room and made of high-clarity polypropylene. Bold black graduations are easy to read and accurate to $\pm 2\%$. A large white marking area provides excellent contrast for identification. New 50mL tubes include 50mL graduation line as well as 1, 2, and 3mL mold graduations into the conical bottom. The extended cap design facilitates one hand removal of caps and helps prevent contamination. Conical bottom tubes have smooth, flat surface polyethylene caps. Self-standing tubes have a plug seal polyethylene cap. Both cap styles provide an integral seal. Temperature range is -80°C to 120°C . All centrifuge tubes are supplied sterile (gamma irradiated).

Tubes are available in recyclable racks or bulk packaged in sterile re-sealable (zip closure) bags. Inner bags contain lot number information. Gamma irradiation sterilized, RNase-free, DNase-free, DNA-free, and Non-pyrogenic.

| Part Number | Description | Packaging | Max Force (RCF) g | Qty/ Pack | Qty/ Case | Price/ Case |
|--------------|---|-----------|-------------------|-----------|-----------|-------------|
| CLS-4302-015 | 15mL, Conical | Rack | 12,000 | 50 | 500 | 135.00◇ |
| CLS-4302-050 | 50mL, Conical | Rack | 12,000 | 25 | 500 | 175.00◇ |
| CLS-4303-015 | 15mL, Conical | Bag | 12,000 | 25 | 500 | 125.00◇ |
| CLS-4303-050 | 50mL, Conical | Bag | 12,000 | 25 | 500 | 165.00◇ |
| CLS-4304-050 | 50mL, Self-Standing | Bag | 6,000 | 25 | 500 | 195.00◇ |
| CLS-4306-001 | Tube Only, 15mL, Non-Sterile | | 12,000 | - | 500 | 61.00◇ |
| CLS-4306-003 | Cap Only, 15mL, Non-Sterile | | 12,000 | - | 500 | 14.00◇ |
| CLS-4306-005 | Cap Only, 50mL, Non-Sterile | | 12,000 | - | 500 | 32.00◇ |
| CLS-4302-N50 | Tube Rack, 50mL, Non-Sterile | | 12,000 | - | 500 | 125.00◇ |
| CLS-4305-001 | Tube Marker, Permanent, Fine Tip, Fast Drying | | | | 5 | 16.00◇ |

CLS-4308 & CLS-4309 CENTRIFUGE TUBES, FLIP TOP CAPS

CELLTREAT® Flip Top centrifuge tubes are manufactured in a class 100,000 clean room and made of high-clarity polypropylene. Graduations are printed in bold, easy-to-read black and are accurate to $\pm 2\%$. Large white marking area provides excellent contrast for identification. The ergonomic, leak-free flip top cap design allows easy one hand opening of caps while preventing loss of a separate cap. Flip top caps are smooth, flat surface polyethylene. Maximum RCF is 9,400(g). Temperature range is -80°C to 120°C . CELLTREAT® 15 and 50mL Flip Top Centrifuge Tubes are available in either paperboard recyclable racks or bulk packed in sterile, re-sealable (zip closure) bags. Gamma irradiation sterilized, RNase-free, DNase-free, DNA-free and Non-pyrogenic.

| Part Number | Description | Case Qty | Price |
|--------------|--|----------|---------|
| CLS-4308-015 | 15mL Flip Top Centrifuge Tube, Sterile, Rack | 500 | 160.00◇ |
| CLS-4308-050 | 50mL Flip Top Centrifuge Tube, Sterile, Rack | 500 | 210.00◇ |
| CLS-4309-015 | 15mL Flip Top Centrifuge Tube, Sterile, Bulk | 500 | 145.00◇ |
| CLS-4309-050 | 50mL Flip Top Centrifuge Tube, Sterile, Bulk | 500 | 190.00◇ |

CLS-4310 TUBE, MICRO CENTRIFUGE, STERILE

Micro Centrifuge tubes are available in three sizes; 0.5mL, 1.5mL and 2.0mL. CELLTREAT® Micro Centrifuge tubes have an attached flat top cap, engraved graduations and are manufactured from high quality polypropylene. The tubes have a temperature range of -80°C to 120°C . CELLTREAT® Micro Centrifuge tubes have a maximum (RCF) of 16,000g and are packaged in easy opening plastic bags.

| Part Number | Description | Qty/ Pack | Qty/ Case | Price/ Case |
|--------------|---|-----------|-----------|-------------|
| CLS-4310-005 | 0.5mL Micro Centrifuge Tube | 500 | 5000 | 150.00◇ |
| CLS-4310-015 | 1.5mL Micro Centrifuge Tube | 500 | 5000 | 160.00◇ |
| CLS-4310-020 | 2.0mL Micro Centrifuge Tube | 500 | 5000 | 175.00◇ |
| CLS-4310-520 | 2.0mL Micro Centrifuge Tube Self Standing | 500 | 5000 | 210.00◇ |

FLIP-TOP CAP



CLS-1601 MINI CENTRIFUGE

These mini centrifuges are popular for quick spins, microfiltration of samples, and cell separations. With a clear cover made of high strength plastic affords high visibility of samples. The centrifuge quickly accelerates to their maximum speed and stops within seconds. They are manufactured to precise specifications resulting in smooth runs both quiet and vibration-free operation.

Included is a round rotor with capacity for six standard microtubes (1.5 to 2.0mL) as well as a strip tube rotor for 2x8 PCR strips or sixteen individual 0.2mL tubes. The rotors can be easily interchanged by the user within a matter of seconds.

**SPECIFICATIONS:**

| | CLS-1601-001 | CLS-1601-003 |
|-----------------------------------|-------------------------------------|-------------------------------------|
| RPM: | 6,000 | 10,000 |
| RCF: | 2,000 xg | 5,000 xg |
| Max Capacity: Microtube Rotor: | 6 x 1.5/2.0mL | 6 x 1.5/2.0mL |
| PCR Strip Rotor: | 2 x 8 Strips or 16 x 0.2mL Tubes | 2 x 8 Strips or 16 x 0.2mL Tubes |
| Dimensions (WxDxH): | 5.5 x 6.1 x 4.5 in. | 5.5 x 6.1 x 4.5 in. |
| Operating Temp: | +4°C to 50°C | +4°C to 50°C |
| Warranty | 1 Year | 1 Year |
| Electrical | 110V, 50/60Hz, 0.1A | 110V, 50/60Hz, 0.1A |

| Part Number | Description | Price |
|---------------------|-----------------------------------|----------------|
| CLS-1601-001 | Mini Centrifuge, 6,000rpm | 199.00* |
| CLS-1601-003 | Mini Centrifuge, 10,000rpm | 199.00* |

CLS-3200 COOLCUBE™ MICROTUBE AND MICROPLATE COOLER

The CoolCube™ is designed to store samples safely on the lab bench without sample degradation due to temperature increase or fluctuation. Constructed of DuraStar (a high strength polymer) and a patented gel refrigerant, the CoolCube™ maintains temperature at approximately 0°C for up to four hours.

Simply place the CoolCube™ in a freezer overnight and it's ready for use, keeping samples cool and safe at the bench, without messy ice buckets or wet tubes.

One side of the CoolCube™ can be used as a convenient PCR workstation with wells for 12 standard 1.5/2.0mL microtubes and one 96 well PCR plate or 0.2mL tubes/strips. The other side can be used to hold 36 standard 1.5/2.0mL microtubes.

**SPECIFICATIONS:**

| | |
|---------------------|--|
| Temperature: | 0°C for 4 Hours |
| Capacity: | (36) 1.5mL Tubes (96) 0.2mL Tubes (12) 0.2mL Strips (1) 96-Well PCR Plate |
| Dimensions (DxWxH): | 5.6 x 5.6 x 2.5 inches |
| Weight: | 2lbs |
| Material: | DuraStar Polymer |

| Part Number | Description | Price |
|---------------------|--|---------------|
| CLS-3200-001 | CoolCube™ Microtube and Microplate Cooler | 99.00* |



CLS-4030 MULTI-THERM™ TEMPERATURE CONTROLLED SHAKER

The Multi-Therm™ Shaker is a temperature controlled vortexer, useful for a variety of molecular biology applications including:

- Denaturation of DNA, RNA and proteins
- Reverse transcription
- Lipid extractions
- DNA/plasmid isolation
- Yeast and bacteria cultivation
- Gentle thawing of biological materials
- Restriction digests

Despite its modest 8x11in footprint, all popular tubes and plates are compatible, including as many as six 50mL tubes. Speed, time and temperature settings are continuously visible on the LCD, simultaneously showing both actual and selected values. Integral over-temperature control ensures long life, safety and sample integrity.

SPECIFICATIONS:

| | |
|---------------------------------------|----------------------------|
| Temp. Range Heating and Cooling Model | Ambient -20° to 100°C |
| Temp. Range Heating Model | Ambient +5° to 100°C |
| Heating Ramp Rate | 5°C/min |
| Cooling Ramp Rate | 2.5°C/min (HC Only) |
| Temp. Accuracy | ±1.0°C |
| Speed Range | 200 to 1,500rpm or “OFF” |
| Motion/Orbit | Horizontally Circular/2mm |
| Capacity | Per Selected Block |
| Dimensions (WxDxH) | 8.25 x 11.5 x 8.25in |
| Weight | 18lbs |
| Electrical | 120V, 60Hz / 230V, 50-60Hz |

| Part Number | Description | Price |
|---------------------|---|------------------|
| CLS-4030-001 | Multi-Therm™ Heating & Cooling Shaker, 120V | 2,395.00* |
| CLS-4030-003 | Multi-Therm™ Heating Shaker, 120V | 1,695.00* |
| CLS-4030-021 | Multi-Therm™ Heating & Cooling Shaker, 230V | 2,395.00* |
| CLS-4030-023 | Multi-Therm™ Heating Shaker, 230V | 1,695.00* |
| CLS-4030-005 | Multi-Therm™ Block, 96 x 0.2mL or (1) PCR Plate | 295.00* |
| CLS-4030-007 | Multi-Therm™ Block, 54 x 0.5mL | 249.00* |
| CLS-4030-009 | Multi-Therm™ Block, Combo 15 x 0.5 & 20 x 1.5mL | 249.00* |
| CLS-4030-011 | Multi-Therm™ Block, 35 x 1.5mL | 249.00* |
| CLS-4030-013 | Multi-Therm™ Block, 35 x 2.0mL | 249.00* |
| CLS-4030-015 | Multi-Therm™ Block, 24 x 12mm, (200 to 1,200rpm/Ambient -10° to 100°C) | 349.00* |
| CLS-4030-017 | Multi-Therm™ Block, 12 x 15mL, (200 to 750rpm/Ambient -10° to 100°C) | 349.00* |
| CLS-4030-019 | Multi-Therm™ Block, 6 x 50mL, (200 to 750rpm/Ambient -10° to 100°C) | 349.00* |

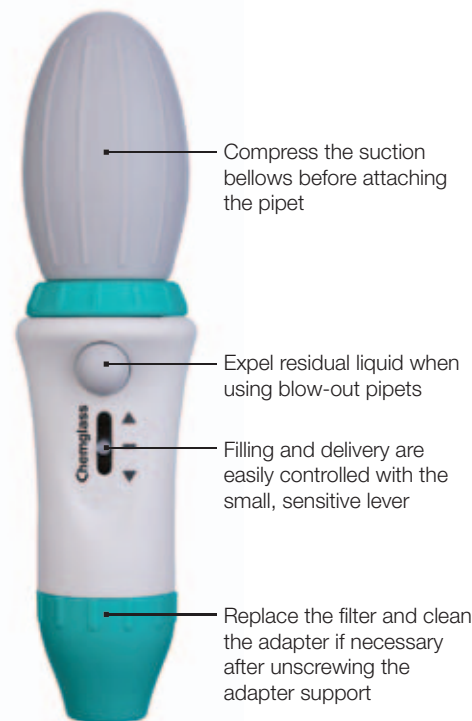
CLS-3470-10 PIPETTE CONTROLLER

Comfortable and easy to use, the Pipette Controller measures 8 inches long x 2 inches wide. Precise pipetting can be accomplished using glass or plastic volumetric and graduated pipettes from 0.1 to 100mL.

The Pipette Controller also has a blowout feature, uses protective/replaceable syringe filter, and is easy to take apart for cleaning. The filling and delivery area are easily controlled with a small, sensitive lever.

Features:

- Comfortable and Simple to Use
- Precise Pipetting Control
- Robust and Lightweight
- Fits the Entire Range of Both Glass and Plastic Volumetric and Graduated Pipettes from 0.1 to 100mL
- Uses Replaceable 3.0µm Filter
- Easy to Maintain and Clean
- Filling and Delivery are Easily Controlled with a Small Sensitive Lever
- Complies with ISO9001, 13485 and GLP Guidelines



| Part Number | Description | Price |
|--------------------|--|----------------|
| CLS-3470-10 | Pipette Controller, Manual, Green | 42.00 ◊ |

CLS-3472-10 MOTORIZED PIPETTE FILLER

The motorized Pipette Filler features a full volume range of 0.1 to 100mL with easy one-handed operation. It's lightweight, ergonomic design allows longer, fatigue-free pipetting with separate aspirate and dispense speed controls. A large LCD display provides visual confirmation of remaining battery charge and speed settings. The lithium-ion battery offers long runtime per charge without battery memory problems. The fully autoclavable nosecone housing simplifies disinfecting and decontamination.

SPECIFICATIONS:

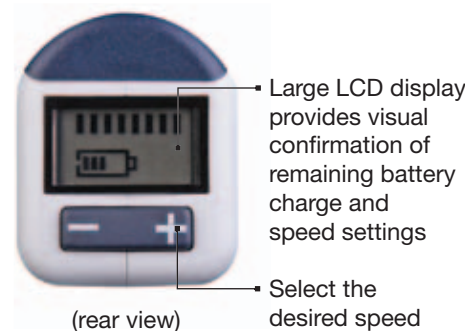
| | |
|----------------------|---|
| Aspirate Speeds | 8 |
| Dispense Speeds | 8 + Gravity Dispense |
| Battery | Rechargeable Lithium-Ion |
| Battery Service Life | More than 15 Hours of Continuous Use |
| Charging Time | Approx. 2 Hours |
| Pipette Types | Glass or Plastic Pipettes (0.1-100mL), Pasture Pipettes |
| Filter | Hydrophobic |



| Part Number | Description | Price |
|--------------------|---------------------------------|-----------------|
| CLS-3472-10 | Motorized Pipette Filler | 200.00 ◊ |

REPLACEMENT PARTS

| Part Number | Description | Price |
|--------------------|--|----------------|
| CLS-3472-12 | 0.45µm Hydrophobic Filter | 4.50 ◊ |
| CLS-3472-14 | 0.20µm Sterile Hydrophobic Filter | 5.00 ◊ |
| CLS-3472-16 | Replacement Battery | 33.00 ◊ |
| CLS-3472-18 | Standard Nose | 14.65 ◊ |
| CLS-3472-20 | Silicone Adapter | 3.00 ◊ |





CLS-3480 SEROLOGICAL PIPETS

CELLTREAT® disposable serological pipets are manufactured from optically clear polystyrene in a class 100,000 clean room. Available sizes are 1mL, 2mL, 5mL, 10mL, 25mL and 50mL. The 1mL, 2mL and 5mL pipets are one piece construction and the 10mL, 25mL and 50mL pipets are made with a durable, ultrasonically welded three piece construction. Bold, clear, bi-directional graduations are calibrated for accurate dispensing to within ±2%. The pipets include color coded stripes for quick volume identification. Pipets are compatible with most pipet aids and include an end plug to help prevent pipet aid contamination. The pipet plugs are a premium material which creates a filter barrier, performing better than standard cotton plugs.

Individually wrapped pipets are in a sterile, easy to open paper/plastic packaging. Individual wrapped pipets are available in economical bags and convenient color coded shelf packs that facilitate dispensing through a perforated end panel. Each pipet wrapper includes the lot number. Bulk pipets are also available in all sizes. Gamma irradiation sterilized, RNase-Free, DNase-Free, DNA-Free and Non-pyrogenic.

CELLTREAT® also offers disposable aspirating pipets in 1mL, 2mL and 5mL sizes. Aspirating pipets are supplied without graduations or plugs and are available individually wrapped or bulk packed.

CLS-3480 SEROLOGICAL PIPETS

| Part Number | Description | Color Coded | Case Qty | Price |
|--------------|---|-------------|----------|---------|
| CLS-3480-001 | Pipet, Individually Wrapped, 1mL, Shelf Pack Box | Yellow | 800 | 180.00◇ |
| CLS-3480-002 | Pipet, Individually Wrapped, 2mL, Shelf Pack Box | Green | 600 | 170.00◇ |
| CLS-3480-005 | Pipet, Individually Wrapped, 5mL, Shelf Pack Box | Blue | 200 | 81.00◇ |
| CLS-3480-010 | Pipet, Individually Wrapped, 10mL, Shelf Pack Box | Orange | 200 | 86.00◇ |
| CLS-3480-025 | Pipet, Individually Wrapped, 25mL, Shelf Pack Box | Red | 200 | 178.00◇ |
| CLS-3480-050 | Pipet, Individually Wrapped, 50mL, Shelf Pack Box | Purple | 90 | 148.00◇ |
| CLS-3481-001 | Pipet, Individually Wrapped, 1mL, 100/Bag | Yellow | 800 | 98.00◇ |
| CLS-3481-002 | Pipet, Individually Wrapped, 2mL, 100/Bag | Green | 600 | 98.00◇ |
| CLS-3481-005 | Pipet, Individually Wrapped, 5mL, 50/Bag | Blue | 200 | 38.00◇ |
| CLS-3481-010 | Pipet, Individually Wrapped, 10mL, 50/Bag | Orange | 200 | 40.00◇ |
| CLS-3481-025 | Pipet, Individually Wrapped, 25mL, 50/Bag | Red | 200 | 70.00◇ |
| CLS-3481-050 | Pipet, Individually Wrapped, 50mL, 30/Bag | Purple | 90 | 110.00◇ |
| CLS-3482-001 | Pipet, 1mL, Bulk Pack, 50/Bag | Yellow | 1000 | 198.00◇ |
| CLS-3482-002 | Pipet, 2mL, Bulk Pack, 50/Bag | Green | 800 | 196.00◇ |
| CLS-3482-005 | Pipet, 5mL, Bulk Pack, 25/Bag | Blue | 500 | 160.00◇ |
| CLS-3482-010 | Pipet, 10mL, Bulk Pack, 25/Bag | Orange | 500 | 170.00◇ |
| CLS-3482-025 | Pipet, 25mL, Bulk Pack, 25/Bag | Red | 200 | 140.00◇ |
| CLS-3482-050 | Pipet, 50mL, Bulk Pack, 25/Bag | Purple | 200 | 270.00◇ |

CLS-3484 ASPIRATING PIPETS

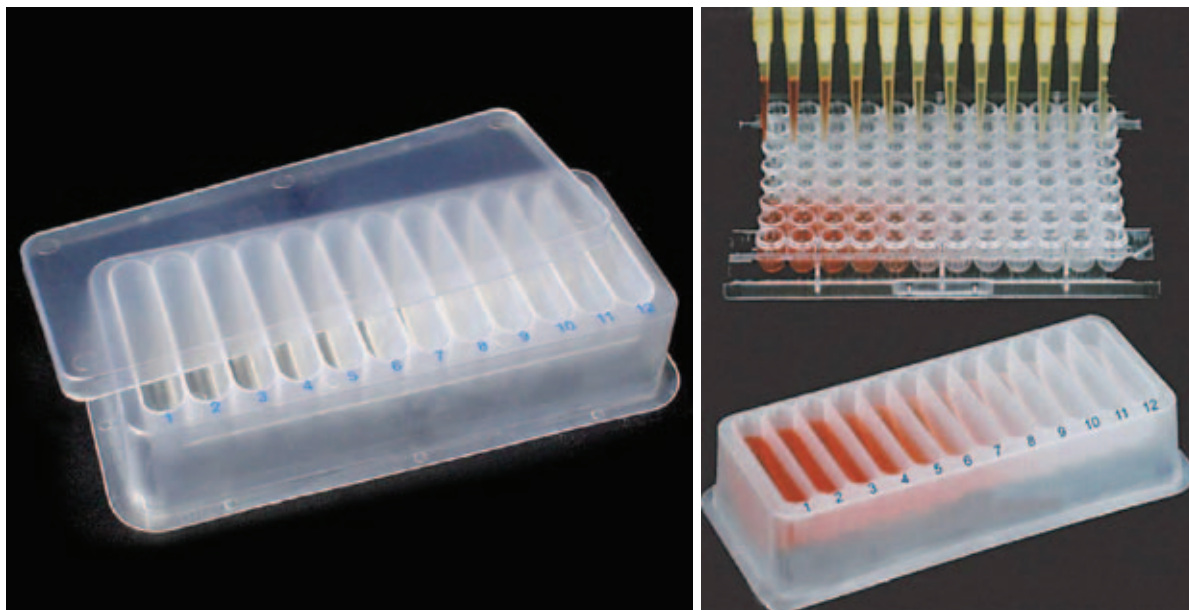
CELLTREAT® offers disposable Aspirating Pipets in 1mL, 2mL and 5mL sizes. Aspirating pipets are supplied without graduations or plugs and are available individually wrapped or bulk-packed. Individually wrapped pipets are in a sterile, easy to open paper/plastic packaging. Individual wrapped pipets are available in economical bags and convenient color coded shelf packs that facilitate dispensing through a perforated and panel. Each pipet wrapper includes the lot number.

| Part Number | Description | Color Coded | Qty/Case | Price/Case |
|--------------|---|-------------|----------|------------|
| CLS-3484-001 | Pipet, Aspirating, 1mL, No Plug, Bulk Pack, 50/Bag | Yellow | 400 | 47.00◇ |
| CLS-3484-002 | Pipet, Aspirating, 2mL, No Plug, Bulk Pack, 50/Bag | Green | 400 | 96.00◇ |
| CLS-3484-005 | Pipet, Aspirating, 5mL, No Plug, Bulk Pack, 25/Bag | Orange | 200 | 61.00◇ |
| CLS-3484-101 | Pipet, Aspirating, 1mL, Individually Wrapped, 100/Bag | Yellow | 400 | 48.00◇ |
| CLS-3484-102 | Pipet, Aspirating, 2mL, Individually Wrapped, 100/Bag | Green | 400 | 98.00◇ |
| CLS-3484-105 | Pipet, Aspirating, 5mL, Individually Wrapped, 50/Bag | Orange | 200 | 37.00◇ |



Shelf Pack Dispensing Box

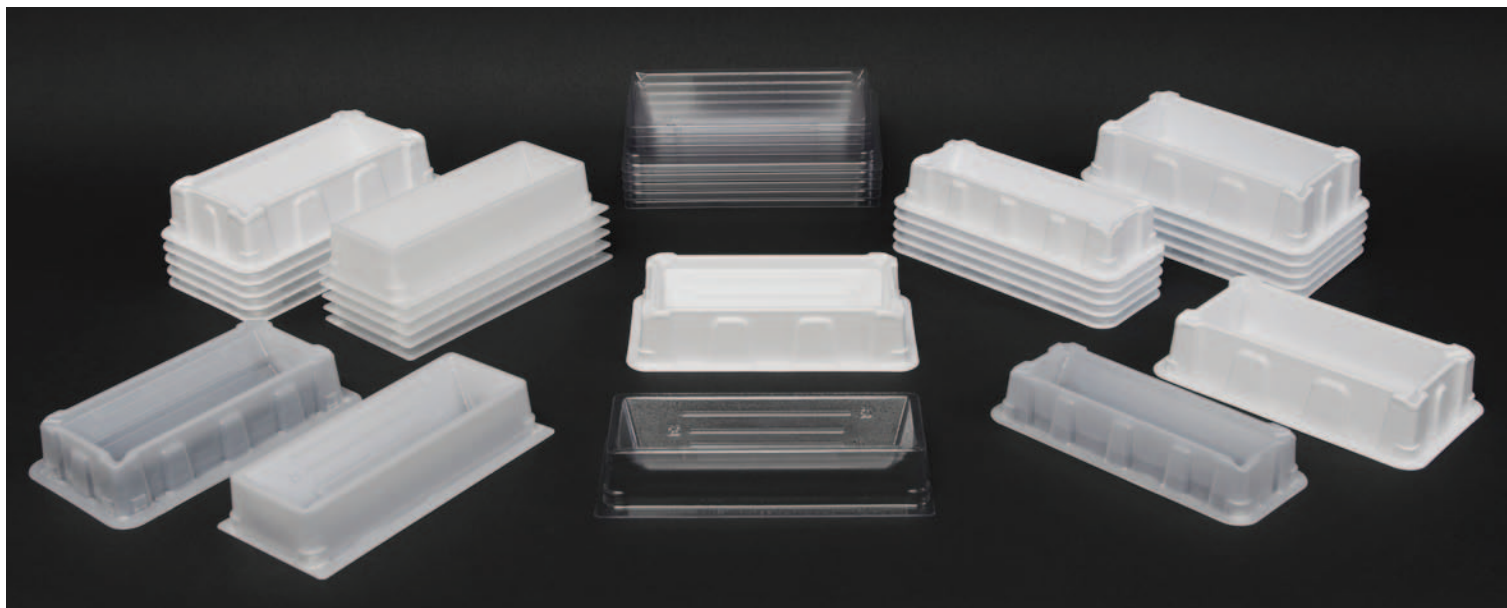




CLS-3796 RESERVOIR, DILUX™ DILUTION

Designed for making serial dilutions of biological samples and chemical reagents using multichannel pipettors, the 12-chamber reservoir holds up to 5mL of sample. The rounded sides and bottom of the chambers permit complete sample withdrawal. A numerical code inscribed for each chamber ensures accurate sample reference. The fitted lid minimizes sample evaporation and contamination during incubation or storage, while the broad base of the container ensures bench stability. Available both sterile and non-sterile. Dilux™ is a trademark of Dilux™ Corp.

| Part Number | Description | Pkg Qty | Price |
|---------------------|--|-----------|----------------|
| CLS-3796-001 | Reservoir, Dilux™ Dilution, Sterile | 20 | 104.00◇ |
| CLS-3796-003 | Reservoir, Dilux™ Dilution, Non-Sterile, w/Lid | 50 | 175.00◇ |
| CLS-3796-005 | Reservoir, Dilux™ Dilution, Lid Only, Non-Sterile | 50 | 19.00◇ |



CLS-3798 DISPOSABLE PIPETTING RESERVOIRS

Reservoirs are designed for use in multichannel pipetting applications. Our disposable reservoirs accommodate all types of pipettors up to 12-channel width. They feature a trough design, graduation marks on interior walls, and pour-off spouts on each corner. All sterile reservoirs are lot-certified, nonpyrogenic, and DNase- and RNase-free.

The 25mL reservoirs are also available in a unique divided format that features either two or three distinct mini reservoir chambers. The two channel reservoir has 5mL and 10mL capacities. The three channel one has 5mL capacity each. All sizes are manufactured from virgin modified polystyrene. Available non-sterile or electron beam sterilized.

STERILE RESERVOIRS 1/PK 100/Case

| Part Number | Description | Price |
|--------------|--|--------|
| CLS-3798-001 | Reservoir White, 25mL | 69.00◇ |
| CLS-3798-003 | Reservoir White, 50mL | 69.00◇ |
| CLS-3798-005 | Reservoir White, 100mL | 69.00◇ |
| CLS-3798-013 | Reservoir White, Single Channel, 25mL* | 76.00◇ |
| CLS-3798-017 | Reservoir White, 3 Channel, Divided 25mL** | 76.00◇ |

NON-STERILE RESERVOIRS BULK 100/Case

| Part Number | Description | Price |
|--------------|---|--------|
| CLS-3798-007 | Reservoir White, 25mL Non-Sterile | 41.00◇ |
| CLS-3798-009 | Reservoir White, 50mL Non-Sterile | 49.00◇ |
| CLS-3798-011 | Reservoir White, 100mL Non-Sterile | 49.00◇ |
| CLS-3798-015 | Reservoir White, Single Channel, 25mL* | 41.00◇ |
| CLS-3798-019 | Reservoir White, 3 Chanel Divided, 25mL** | 41.00◇ |

*2 Channels 5mL / 10mL

**3 Channels – 5mL / Channel

FLASK, ERLLENMEYER, PLAIN STERILE, POLYCARBONATE

Erlenmeyer flasks are sterile, non-pyrogenic and manufactured with Lexan® polycarbonate resin. Flasks are supplied with exclusive DuoCap™ designed for both aerobic and anaerobic applications. For aerobic applications the cap utilizes a 0.22 µm pore-size PTFE membrane for sterile air exchange. For anaerobic applications the cap can easily be converted to a solid top design. Solid top caps are also ideal for applications requiring mixing, shaking and storage of biological fluids. Graduations are molded for accuracy. New EZ-Tear™ packaging allows for easy access.



| Part Number | Capacity mL | GPI Thread Size | Pkg. Qty. | Pkg. Price |
|----------------------|-------------|-----------------|-----------|----------------|
| CLS-2090-0125 | 125 | 38-430 | 6 | 38.10 ◊ |
| CLS-2090-0250 | 250 | 38-430 | 4 | 32.80 ◊ |
| CLS-2090-0500 | 500 | 38-430 | 4 | 38.40 ◊ |
| CLS-2090-1000 | 1000 | 53B | 2 | 35.00 ◊ |
| CLS-2090-2000 | 2000 | 53B | 2 | 37.40 ◊ |

FLASK, ERLLENMEYER, BAFFLED, STERILE, POLYCARBONATE

Similar to CLS-2090 but Quadrupled baffled

| Part Number | Capacity mL | GPI Thread Size | Pkg. Qty. | Pkg. Price |
|----------------------|-------------|-----------------|-----------|----------------|
| CLS-2091-0125 | 125 | 38-430 | 6 | 38.10 ◊ |
| CLS-2091-0250 | 250 | 38-430 | 4 | 32.80 ◊ |
| CLS-2091-0500 | 500 | 38-430 | 4 | 38.40 ◊ |
| CLS-2091-1000 | 1000 | 53B | 2 | 35.00 ◊ |
| CLS-2091-2000 | 2000 | 53B | 2 | 37.40 ◊ |



Quadruple Baffle

DuoCAP™, ONLY, STERILE

The DuoCap™ is designed for both aerobic and anaerobic applications. For aerobic applications the cap utilizes a 0.22 µm pore-size PTFE membrane for sterile air exchange. For anaerobic applications the cap can easily be converted to a solid top design. Solid top caps are also ideal for applications requiring mixing, shaking and storage of biological fluids. Graduations are molded for accuracy. New EZ-Tear™ packaging allows for easy access.



| Number | GPI Thread Size | Pkg. Qty. | Pkg. Price |
|----------------------|-----------------|-----------|----------------|
| CLS-2090-0038 | 38-430 | 12 | 42.00 ◊ |
| CLS-2090-0053 | 53-B | 6 | 27.00 ◊ |

1. Add culture media & inoculum



2. Add DuoCap™ for anaerobic culture



3. Remove dustguard cover for aerobic culture



4. Move to shaker incubator



◊ - Subject to Life Sciences Consumables Discount



3800 North Mill Road, Vineland NJ 08360
 U.S. and Canada phone: 1-800-843-1794 • Fax: 1-800-922-4361
 customer-service@cglifesciences.com • www.cglifesciences.com